

Order from:
 Dick Jones Sales, Inc.
 P.O. Box 141
 Hanover, PA 17331
 Phone 800-441-9955
 dickjones@dickjonessales.com

INDUSTRIAL & COMMERCIAL LADDERS



STANDARD SLOPE LADDERS



SPRING LOADED LADDERS



CROSS-OVER LADDERS



MODULAR STAIRWAYS



ROLLING STEP STOOLS



STEP-MATE STANDS

Rolling Warehouse Ladders	▼	G2-G3
Standard Slope Ladders	▼	G4
Maintenance Ladders	▼	G5, G10
Tip-N-Roll Mobile Ladders	▼	G5
Roll-A-Fold Ladders	▼	G6
Spring Loaded Ladders	▼	G6
Alternating Tread Stairs	▼	G7-G8
Cross-Over Ladders	▼	G7-G8
Modular Steel Work Platform System	▼	G9
Mezzanine Ladders	▼	G5, G10
Aluminum Ladders & Stands	▼ R	G10-G11
Fiberglass Ladders	R	G12
Step Ladders & Stands	▼ R	G13-G14
Adjustable Stands	▼	G15-G17



model LAD-6-14-P shown
with LAD-GATE-58 option



OPTIONAL LADDER
SAFETY GATE



CASTER FOOT LEVER



model LAD-6-14-P-EZ shown
with LAD-GATE-50-EZ option

Rolling Warehouse Ladders (6 to 11 Step)

Finally an easy and safe solution for reaching products on high shelves. Constructed of square tubing framework, which handles uniform capacities up to 350 lbs. Units feature a 58° climb angle and EZ models feature a 50° climb angle. The handrail height is 30". Each step is 24" wide by 7" deep. Choose either grip strut style or perforated style steps. Front wheels are 10" diameter. Unique design allows ladder to separate for shipping and storage. Welded steel construction with powder coat finish. Manufactured in compliance with OSHA 1910.29 and ANSI A14.7 standards. Units are shipped knockdown, some assembly required.

Optional safety gate sold separately to help keep children and unauthorized personnel off the ladder. Activating the caster foot lever will lift the gate into an upright position and engage the casters on the floor. This deters access to the ladder and allows the ladder to be moved. Pushing the gate forward will disengage the casters from the floor and allow for safe access to the ladder.

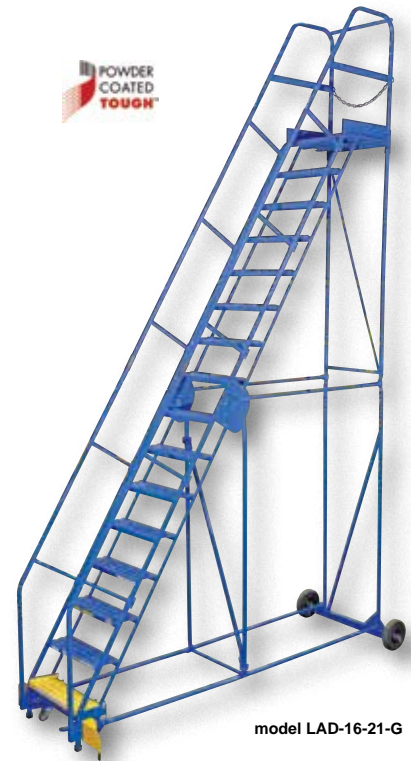
MODEL NUMBER	NO. OF STEPS	TOP STEP HEIGHT	OVERALL HEIGHT	BASE SIZE (W x D)	TOP STEP DEPTH	WEIGHT (POUND)
GRIP STRUT STEPS - 58°						
LAD-6-14-G	6	60"	90"	34¼" x 53 ¹⁵ / ₁₆ "	14"	207
LAD-7-14-G	7	70"	100"	34¼" x 60 ¹ / ₁₆ "	14"	231
LAD-8-14-G	8	80"	110"	34¼" x 66 ¹⁵ / ₁₆ "	14"	253
LAD-9-14-G	9	90"	120"	34¼" x 72 ¹¹ / ₁₆ "	14"	274
LAD-10-14-G	10	100"	130"	34¼" x 78 ¹⁵ / ₁₆ "	14"	289
LAD-11-14-G	11	110"	140"	34¼" x 85 ¹ / ₁₆ "	14"	367
LAD-6-21-G	6	60"	90"	34¼" x 60"	21"	208
LAD-7-21-G	7	70"	100"	34¼" x 66 ¹⁵ / ₁₆ "	21"	243
LAD-8-21-G	8	80"	110"	34¼" x 72 ⁹ / ₈ "	21"	264
LAD-9-21-G	9	90"	120"	34¼" x 78 ¹⁵ / ₁₆ "	21"	285
LAD-10-21-G	10	100"	130"	34¼" x 85 ³ / ₁₆ "	21"	309
LAD-11-21-G	11	110"	140"	34¼" x 91¼"	21"	382
PERFORATED STEPS - 58°						
LAD-6-14-P	6	60"	90"	34¼" x 53 ¹⁵ / ₁₆ "	14"	195
LAD-7-14-P	7	70"	100"	34¼" x 60 ¹ / ₁₆ "	14"	230
LAD-8-14-P	8	80"	110"	34¼" x 66 ¹⁵ / ₁₆ "	14"	251
LAD-9-14-P	9	90"	120"	34¼" x 72 ¹¹ / ₁₆ "	14"	271
LAD-10-14-P	10	100"	130"	34¼" x 78 ¹⁵ / ₁₆ "	14"	295
LAD-11-14-P	11	110"	140"	34¼" x 85 ¹ / ₁₆ "	14"	364
LAD-6-21-P	6	60"	90"	34¼" x 60"	21"	206
LAD-7-21-P	7	70"	100"	34¼" x 66 ¹⁵ / ₁₆ "	21"	241
LAD-8-21-P	8	80"	110"	34¼" x 72 ⁹ / ₈ "	21"	246
LAD-9-21-P	9	90"	120"	34¼" x 78 ¹⁵ / ₁₆ "	21"	262
LAD-10-21-P	10	100"	130"	34¼" x 85 ³ / ₁₆ "	21"	286
LAD-11-21-P	11	110"	140"	34¼" x 91¼"	21"	379
GRIP STRUT STEPS - 50°						
LAD-6-14-G-EZ	6	60"	90"	34¼" x 62 ³ / ₈ "	14"	212
LAD-7-14-G-EZ	7	70"	100"	34¼" x 70 ⁷ / ₈ "	14"	237
LAD-8-14-G-EZ	8	80"	110"	34¼" x 85 ⁵ / ₁₆ "	14"	260
LAD-9-14-G-EZ	9	90"	120"	34¼" x 91½"	14"	281
LAD-10-14-G-EZ	10	100"	130"	34¼" x 97 ¹ / ₁₆ "	14"	306
LAD-11-14-G-EZ	11	110"	140"	34¼" x 103 ⁷ / ₈ "	14"	376
LAD-6-21-G-EZ	6	60"	90"	34¼" x 70 ¹⁵ / ₁₆ "	21"	215
LAD-7-21-G-EZ	7	70"	100"	34¼" x 78 ¹⁵ / ₁₆ "	21"	233
LAD-8-21-G-EZ	8	80"	110"	34¼" x 91 ⁹ / ₁₆ "	21"	256
LAD-9-21-G-EZ	9	90"	120"	34¼" x 97 ³ / ₄ "	21"	272
LAD-10-21-G-EZ	10	100"	130"	34¼" x 103 ¹⁵ / ₁₆ "	21"	297
LAD-11-21-G-EZ	11	110"	140"	34¼" x 110 ⁷ / ₈ "	21"	390
PERFORATED STEPS - 50°						
LAD-6-14-P-EZ	6	60"	90"	34¼" x 62 ³ / ₈ "	14"	200
LAD-7-14-P-EZ	7	70"	100"	34¼" x 70 ⁷ / ₈ "	14"	235
LAD-8-14-P-EZ	8	80"	110"	34¼" x 85 ⁵ / ₁₆ "	14"	242
LAD-9-14-P-EZ	9	90"	120"	34¼" x 91½"	14"	279
LAD-10-14-P-EZ	10	100"	130"	34¼" x 97 ¹ / ₁₆ "	14"	304
LAD-11-14-P-EZ	11	110"	140"	34¼" x 103 ⁷ / ₈ "	14"	373
LAD-6-21-P-EZ	6	60"	90"	34¼" x 70 ¹⁵ / ₁₆ "	21"	211
LAD-7-21-P-EZ	7	70"	100"	34¼" x 78 ¹⁵ / ₁₆ "	21"	231
LAD-8-21-P-EZ	8	80"	110"	34¼" x 91 ⁹ / ₁₆ "	21"	253
LAD-9-21-P-EZ	9	90"	120"	34¼" x 97 ³ / ₄ "	21"	270
LAD-10-21-P-EZ	10	100"	130"	34¼" x 103 ¹⁵ / ₁₆ "	21"	289
LAD-11-21-P-EZ	11	110"	140"	34¼" x 110 ⁷ / ₈ "	21"	387
OPTIONAL SAFETY GATES						
LAD-GATE-58	FOOT ACTIVATED SAFETY GATE 58°					17
LAD-GATE-50-EZ	FOOT ACTIVATED SAFETY GATE 50° - EZ					18

Rolling Warehouse Ladders (12 to 16 Step)

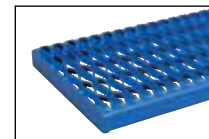
Finally an easy and safe solution for reaching products on high shelves. Each ladder is rated at 350 pounds uniform capacity. Units feature a 58° climb angle and the EZ models features a 50° climb angle. The handrail height is 36" from the top step and around the top step a 4" toeboard is included. Each step is 24" wide by 7" deep. Choose either grip strut style or perforated style steps. Front wheels are 10" diameter. Side frame is constructed from welded square tubular steel and offers maximum strength. Unique design allows ladder to separate for shipping and storage. Welded steel construction with baked-in powder-coated toughness. Manufactured in compliance with OSHA 1910.29 and ANSI A14.7 standards.

Optional safety gate sold separately to help keep children and unauthorized personnel off the ladder. Activating the caster floor lever will lift the gate into an upright position. Pushing the gate forward will disengage the casters from the floor and allow for safe access to the ladder.

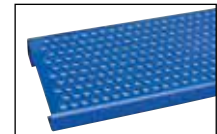
POWDER
COATED
TOUGH



model LAD-16-21-G



GRIP STRUT STEP



PERFORATED STEP



model LAD-16-21-G shown
with LAD-GATE-58 option

MODEL NUMBER	NO. OF STEPS	TOP STEP HEIGHT	OVERALL HEIGHT	BASE SIZE (W x D)	TOP STEP DEPTH	WEIGHT (POUND)
GRIP STRUT STEPS - 58°						
LAD-12-14-G	12	120"	156"	34¼" x 91 ⁵ / ₁₆ "	14"	391
LAD-13-14-G	13	130"	166"	42¼" x 95 ⁹ / ₁₆ "	14"	441
LAD-14-14-G	14	140"	176"	42¼" x 101 ⁷ / ₈ "	14"	466
LAD-15-14-G	15	150"	186"	42¼" x 108"	14"	489
LAD-16-14-G	16	160"	196"	42¼" x 115¼"	14"	511
LAD-12-21-G	12	120"	156"	34¼" x 97½"	21"	406
LAD-13-21-G	13	130"	166"	42¼" x 102 ⁹ / ₁₆ "	21"	457
LAD-14-21-G	14	140"	176"	42¼" x 108 ⁷ / ₈ "	21"	482
LAD-15-21-G	15	150"	186"	42¼" x 115"	21"	505
LAD-16-21-G	16	160"	196"	42¼" x 122¼"	21"	527
PERFORATED STEPS - 58°						
LAD-12-14-P	12	120"	156"	34¼" x 91 ⁵ / ₁₆ "	14"	388
LAD-13-14-P	13	130"	166"	42¼" x 95 ⁹ / ₁₆ "	14"	437
LAD-14-14-P	14	140"	176"	42¼" x 101 ⁷ / ₈ "	14"	462
LAD-15-14-P	15	150"	186"	42¼" x 108"	14"	490
LAD-16-14-P	16	160"	196"	42¼" x 115¼"	14"	507
LAD-12-21-P	12	120"	156"	34¼" x 97½"	21"	402
LAD-13-21-P	13	130"	166"	42¼" x 102 ⁹ / ₁₆ "	21"	453
LAD-14-21-P	14	140"	176"	42¼" x 108 ⁷ / ₈ "	21"	478
LAD-15-21-P	15	150"	186"	42¼" x 115"	21"	501
LAD-16-21-P	16	160"	196"	42¼" x 122¼"	21"	523
GRIP STRUT STEPS - 50°						
LAD-11-14-G-EZ	11	110"	146"	34¼" x 103 ⁷ / ₈ "	14"	376
LAD-12-14-G-EZ	12	120"	156"	34¼" x 110 ⁷ / ₈ "	14"	401
LAD-13-14-G-EZ	13	130"	166"	42¼" x 120 ⁷ / ₈ "	14"	453
LAD-14-14-G-EZ	14	140"	176"	42¼" x 128 ¹ / ₁₆ "	14"	480
LAD-15-14-G-EZ	15	150"	186"	42¼" x 136 ⁵ / ₁₆ "	14"	505
LAD-16-14-G-EZ	16	160"	196"	42¼" x 144 ¹³ / ₁₆ "	14"	527
LAD-12-21-G-EZ	12	120"	156"	34¼" x 121 ⁷ / ₁₆ "	21"	416
LAD-13-21-G-EZ	13	130"	166"	42¼" x 127 ⁷ / ₈ "	21"	469
LAD-14-21-G-EZ	14	140"	176"	42¼" x 135 ¹ / ₁₆ "	21"	496
LAD-15-21-G-EZ	15	150"	186"	42¼" x 143 ⁵ / ₁₆ "	21"	521
LAD-16-21-G-EZ	16	160"	196"	42¼" x 151 ¹³ / ₁₆ "	21"	543
PERFORATED STEPS - 50°						
LAD-12-14-P-EZ	12	120"	156"	34¼" x 110 ⁷ / ₈ "	14"	398
LAD-13-14-P-EZ	13	130"	166"	42¼" x 120 ⁷ / ₈ "	14"	450
LAD-14-14-P-EZ	14	140"	176"	42¼" x 128 ¹ / ₁₆ "	14"	476
LAD-15-14-P-EZ	15	150"	186"	42¼" x 136 ⁵ / ₁₆ "	14"	501
LAD-16-14-P-EZ	16	160"	196"	42¼" x 144 ¹³ / ₁₆ "	14"	523
LAD-12-21-P-EZ	12	120"	156"	34¼" x 121 ⁷ / ₁₆ "	21"	413
LAD-13-21-P-EZ	13	130"	166"	42¼" x 127 ⁷ / ₈ "	21"	465
LAD-14-21-P-EZ	14	140"	176"	42¼" x 135 ¹ / ₁₆ "	21"	492
LAD-15-21-P-EZ	15	150"	186"	42¼" x 143 ⁵ / ₁₆ "	21"	516
LAD-16-21-P-EZ	16	160"	196"	42¼" x 151 ¹³ / ₁₆ "	21"	538
OPTIONS						
LAD-GATE-58	FOOT ACTIVATED SAFETY GATE 58°					17
LAD-GATE-50-EZ	FOOT ACTIVATED SAFETY GATE 50° -EZ					18
LAD-TT-B	TOOL TRAY					



model LAD-PW-26-2-P-NHR



Standard Slope Ladders

Portable Warehouse Ladders for every-day use applications. Heavy-duty uniform weight capacity is 350 lbs. Features 58° standard climb angle. Choose either Perforated or Grip-Strut steps. Step depth is 7" with a top step depth of 14". Welded square tubular steel construction with powder coat blue finish. Rubber feet provided for floor protection. Units with 2-5 steps have (2) two all directional spring-loaded swivel casters and (2) two swivel casters with total locks. Units with 6 to 12 steps have bottom step lock casters for safe use when climbing. Ships knockdown. Ladders comply with OSHA 1910.29, ANSI A14.7 standards.

The ESD-Safe Design features anti-static properties; conductive semi-gloss black baked-in powder-coated toughness, conductive wheels which features gray rubber tread on polyolefin core, and grounding drag chain with resistor, nickel-plated brass construction. Note ladders must be used on conductive floors to comply with ESD properties. Ladders comply with OSHA 1910.29, ANSI A14.7, ANSI S20.20 standards.



model LAD-PW-26-6-G



BOTTOM STEP LOCKS CASTERS FOR SAFE CLIMBING ON UNITS WITH 6 TO 12 STEPS



model LAD-TT-B



model ESD-WGW



model ESD-HGW

NO. OF STEPS	TOP STEP (W x D)	OVERALL (W x D x H)	WEIGHT (POUND)	MODEL NUMBER	
				PERFORATED STEPS	GRIP STRUT STEPS
NO HANDRAIL					
2	16 ¹³ / ₁₆ " x 14"	20 ⁷ / ₈ " x 25 ¹ / ₁₆ " x 20"	79	LAD-PW-18-2-P-NHR	LAD-PW-18-2-G-NHR
3	16 ¹³ / ₁₆ " x 14"	20 ⁷ / ₈ " x 31 ⁹ / ₁₆ " x 30"	89	LAD-PW-18-3-P-NHR	LAD-PW-18-3-G-NHR
4	16 ¹³ / ₁₆ " x 14"	20 ⁷ / ₈ " x 38 ⁵ / ₈ " x 40"	102	LAD-PW-18-4-P-NHR	LAD-PW-18-4-G-NHR
2	23 ⁹ / ₁₆ " x 14"	27 ⁵ / ₈ " x 25 ¹ / ₁₆ " x 20"	87	LAD-PW-26-2-P-NHR	LAD-PW-26-2-G-NHR
3	23 ⁹ / ₁₆ " x 14"	27 ⁵ / ₈ " x 31 ⁹ / ₁₆ " x 30"	101	LAD-PW-26-3-P-NHR	LAD-PW-26-3-G-NHR
4	23 ⁹ / ₁₆ " x 14"	27 ⁵ / ₈ " x 38 ⁵ / ₈ " x 40"	115	LAD-PW-26-4-P-NHR	LAD-PW-26-4-G-NHR
2	30 ¹ / ₄ " x 14"	34 ⁵ / ₁₆ " x 25 ¹ / ₁₆ " x 20"	95	LAD-PW-32-2-P-NHR	LAD-PW-32-2-G-NHR
3	30 ¹ / ₄ " x 14"	34 ⁵ / ₁₆ " x 31 ⁹ / ₁₆ " x 30"	111	LAD-PW-32-3-P-NHR	LAD-PW-32-3-G-NHR
4	30 ¹ / ₄ " x 14"	34 ⁵ / ₁₆ " x 38 ⁵ / ₈ " x 40"	128	LAD-PW-32-4-P-NHR	LAD-PW-32-4-G-NHR
HANDRAIL INCLUDED					
2	16 ¹³ / ₁₆ " x 14"	20 ⁷ / ₈ " x 34 ¹ / ₁₆ " x 50"	95	LAD-PW-18-2-P	LAD-PW-18-2-G
3	16 ¹³ / ₁₆ " x 14"	20 ⁷ / ₈ " x 34 ⁵ / ₁₆ " x 60"	106	LAD-PW-18-3-P	LAD-PW-18-3-G
4	16 ¹³ / ₁₆ " x 14"	20 ⁷ / ₈ " x 40 ⁷ / ₁₆ " x 70"	120	LAD-PW-18-4-P	LAD-PW-18-4-G
5	16 ¹³ / ₁₆ " x 14"	20 ⁷ / ₈ " x 47 ⁵ / ₁₆ " x 80"	136	LAD-PW-18-5-P	LAD-PW-18-5-G
2	23 ⁹ / ₁₆ " x 14"	27 ⁵ / ₈ " x 34 ¹ / ₁₆ " x 50"	104	LAD-PW-26-2-P	LAD-PW-26-2-G
3	23 ⁹ / ₁₆ " x 14"	27 ⁵ / ₈ " x 34 ⁵ / ₁₆ " x 60"	118	LAD-PW-26-3-P	LAD-PW-26-3-G
4	23 ⁹ / ₁₆ " x 14"	27 ⁵ / ₈ " x 40 ⁷ / ₁₆ " x 70"	133	LAD-PW-26-4-P	LAD-PW-26-4-G
5	23 ⁹ / ₁₆ " x 14"	27 ⁵ / ₈ " x 47 ⁵ / ₁₆ " x 80"	151	LAD-PW-26-5-P	LAD-PW-26-5-G
2	30 ¹ / ₄ " x 14"	34 ⁵ / ₁₆ " x 34 ¹ / ₁₆ " x 50"	112	LAD-PW-32-2-P	LAD-PW-32-2-G
3	30 ¹ / ₄ " x 14"	34 ⁵ / ₁₆ " x 34 ⁵ / ₁₆ " x 60"	128	LAD-PW-32-3-P	LAD-PW-32-3-G
4	30 ¹ / ₄ " x 14"	34 ⁵ / ₁₆ " x 40 ⁷ / ₁₆ " x 70"	146	LAD-PW-32-4-P	LAD-PW-32-4-G
5	30 ¹ / ₄ " x 14"	34 ⁵ / ₁₆ " x 47 ⁵ / ₁₆ " x 80"	167	LAD-PW-32-5-P	LAD-PW-32-5-G
HANDRAIL INCLUDED					
6	16 ¹³ / ₁₆ " x 14"	25 ¹ / ₂ " x 50 ¹ / ₈ " x 90"	183	LAD-PW-18-6-P	LAD-PW-18-6-G
7	16 ¹³ / ₁₆ " x 14"	25 ¹ / ₂ " x 56 ¹ / ₄ " x 100"	201	LAD-PW-18-7-P	LAD-PW-18-7-G
6	23 ⁹ / ₁₆ " x 14"	29 ³ / ₄ " x 50 ³ / ₁₆ " x 90"	219	LAD-PW-26-6-P	LAD-PW-26-6-G
7	23 ⁹ / ₁₆ " x 14"	29 ³ / ₄ " x 56 ⁵ / ₁₆ " x 100"	237	LAD-PW-26-7-P	LAD-PW-26-7-G
8	23 ⁹ / ₁₆ " x 14"	29 ³ / ₄ " x 63 ³ / ₁₆ " x 110"	255	LAD-PW-26-8-P	LAD-PW-26-8-G
9	23 ⁹ / ₁₆ " x 14"	29 ³ / ₄ " x 68 ¹⁵ / ₁₆ " x 120"	273	LAD-PW-26-9-P	LAD-PW-26-9-G
10	23 ⁹ / ₁₆ " x 14"	32 ¹ / ₄ " x 75 ¹ / ₈ " x 130"	291	LAD-PW-26-10-P	LAD-PW-26-10-G
11	23 ⁹ / ₁₆ " x 14"	33 ⁹ / ₁₆ " x 81 ³ / ₈ " x 140"	316	LAD-PW-26-11-P	LAD-PW-26-11-G
12	23 ⁹ / ₁₆ " x 14"	33 ⁹ / ₁₆ " x 87 ⁵ / ₈ " x 156"	324	LAD-PW-26-12-P	LAD-PW-26-12-G
6	30 ¹ / ₄ " x 14"	38 ¹⁵ / ₁₆ " x 50 ¹ / ₈ " x 90"	332	LAD-PW-32-6-P	LAD-PW-32-6-G
7	30 ¹ / ₄ " x 14"	38 ¹⁵ / ₁₆ " x 56 ¹ / ₄ " x 100"	340	LAD-PW-32-7-P	LAD-PW-32-7-G
8	30 ¹ / ₄ " x 14"	38 ¹⁵ / ₁₆ " x 63 ³ / ₈ " x 110"	348	LAD-PW-32-8-P	LAD-PW-32-8-G
9	30 ¹ / ₄ " x 14"	38 ¹⁵ / ₁₆ " x 68 ⁷ / ₈ " x 120"	356	LAD-PW-32-9-P	LAD-PW-32-9-G
10	30 ¹ / ₄ " x 14"	38 ¹⁵ / ₁₆ " x 75 ¹ / ₈ " x 130"	362	LAD-PW-32-10-P	LAD-PW-32-10-G
11	30 ¹ / ₄ " x 14"	38 ¹⁵ / ₁₆ " x 81 ³ / ₈ " x 140"	372	LAD-PW-32-11-P	LAD-PW-32-11-G
12	30 ¹ / ₄ " x 14"	38 ¹⁵ / ₁₆ " x 87 ⁵ / ₈ " x 156"	394	LAD-PW-32-12-P	LAD-PW-32-12-G
ESD - SAFE DESIGN					
2	23 ⁹ / ₁₆ " x 14"	27 ⁵ / ₈ " x 34 ¹ / ₁₆ " x 50"	103	---	LAD-PW-26-2-G-ESD
4	23 ⁹ / ₁₆ " x 14"	27 ⁵ / ₈ " x 40 ⁷ / ₁₆ " x 70"	154	---	LAD-PW-26-4-G-ESD
6	23 ⁹ / ₁₆ " x 14"	29 ³ / ₄ " x 50 ³ / ₁₆ " x 90"	227	---	LAD-PW-26-6-G-ESD
8	23 ⁹ / ₁₆ " x 14"	29 ³ / ₄ " x 63 ³ / ₁₆ " x 110"	261	---	LAD-PW-26-8-G-ESD
10	23 ⁹ / ₁₆ " x 14"	32 ¹ / ₄ " x 75 ¹ / ₈ " x 130"	308	---	LAD-PW-26-10-G-ESD
12	23 ⁹ / ₁₆ " x 14"	33 ⁹ / ₁₆ " x 87 ⁵ / ₈ " x 156"	370	---	LAD-PW-26-12-G-ESD

OPTIONS	
MODEL NUMBER	DESCRIPTION
LAD-TT-A	LADDER TOOL TRAY FOR PREFIX LAD-PW-18
LAD-TT-B	LADDER TOOL TRAY FOR PREFIX LAD-PW-26
LAD-TT-C	LADDER TOOL TRAY FOR PREFIX LAD-PW-32
LAD-TT-E	LADDER TOOL TRAY FOR PREFIX LAD-PW-ESD
ESD-WGW	OPTIONAL USER GROUNDING STRAP, ELASTIC ADJUSTABLE WRIST STRAP
ESD-HGW	OPTIONAL USER GROUNDING STRAP, HEEL STRAP
ESD-GW-15	OPTIONAL LADDER TETHERED GROUNDING STRAP; 15 FT. COIL CORD

Maintenance Ladders

Portable ladders for use around warehouses, hardware stores, or inventory rooms. Tilt the unit to allow for portability. Units roll on 4" poly-on-poly wheels. Constructed of square tubing framework, which handles uniform capacities up to 350 pounds. Features 30" high removable hand railing, access chain, 21" deep top platform, and a baked-in powder-coated toughness. Each step measures 24" wide by 7" deep and is spaced 10" apart. Models with 5 - 12 steps are shipped crated, some assembly required. Complies with ANSI A14.7 and OSHA 1910.29 specifications.



NO. OF STEPS	TOP STEP HEIGHT	OVERALL (W x D x H)	WEIGHT (POUND)	MODEL NUMBER PERFORATED	MODEL NUMBER GRIP STRUT
2	20"	29½" x 38½" x 50"	110	LAD-MM-2-P	LAD-MM-2-G
3	30"	29½" x 38½" x 60"	118	LAD-MM-3-P	LAD-MM-3-G
4	40"	29½" x 43 ⁵ / ₈ " x 70"	125	LAD-MM-4-P	LAD-MM-4-G
5	50"	29½" x 49 ³ / ₄ " x 80"	180	LAD-MM-5-P	LAD-MM-5-G
6	60"	29½" x 56 ¹ / ₁₆ " x 90"	210	LAD-MM-6-P	LAD-MM-6-G
7	70"	29½" x 62 ³ / ₈ " x 100"	243	LAD-MM-7-P	LAD-MM-7-G
8	80"	29½" x 68 ⁵ / ₈ " x 110"	276	LAD-MM-8-P	LAD-MM-8-G
9	90"	29½" x 74 ⁷ / ₈ " x 120"	302	LAD-MM-9-P	LAD-MM-9-G
10	100"	32" x 81 ¹ / ₈ " x 130"	337	LAD-MM-10-P	LAD-MM-10-G
11	110"	32" x 87 ³ / ₈ " x 140"	366	LAD-MM-11-P	LAD-MM-11-G
12	120"	32" x 93 ¹ / ₄ " x 156"	379	LAD-MM-12-P	LAD-MM-12-G

Tip-N-Roll Mobile Ladders

These ladders are available in either straddle or non-straddle design. Choose the straddle base for areas with permanent obstructions or non-straddle base for standard applications. When tilted, ladder rolls smoothly on 4" wheels. Uniform capacity is 350 pounds. Straddle base ladders include a removable tool tray that measures 24" x 10". Available with perforated steps or grip strut steps. Blue baked-in powder-coated toughness. Units are shipped knockdown, some assembly required.

FDA Compliant Finish - The square tubular steel Tip-N-Roll FDA Ladder has a special FDA-compliant powder coat white finish that provides a low-cost alternative to stainless steel construction. Rubber feet provide for floor protection. Stainless steel hardware included. When tilted, ladder rolls smoothly on wheels. This ladder has perforated grip steps. Some assembly required.



NUMBER OF STEPS	ANGLE	TOP STEP (W x D x H)	OVERALL SIZE (W x D x H)	WEIGHT (POUND)	MODEL NUMBER	MODEL NUMBER
STRADDLE DESIGN					PERFORATED STEPS	GRIP STRUT STEPS
2	50°	24" x 21" x 20"	29½" x 44 ¹³ / ₁₆ " x 50"	118	LAD-TRS-50-2-P	LAD-TRS-50-2-G
3	50°	24" x 21" x 30"	29½" x 52 ⁹ / ₁₆ " x 60"	137	LAD-TRS-50-3-P	LAD-TRS-50-3-G
4	50°	24" x 21" x 40"	29½" x 60 ¹⁵ / ₁₆ " x 70"	167	LAD-TRS-50-4-P	LAD-TRS-50-4-G
5	50°	24" x 21" x 50"	29½" x 69 ³ / ₈ " x 80"	200	LAD-TRS-50-5-P	LAD-TRS-50-5-G
6	50°	24" x 21" x 60"	29½" x 77 ¹ / ₈ " x 90"	226	LAD-TRS-50-6-P	LAD-TRS-50-6-G
2	58°	24" x 21" x 20"	29½" x 44 ³ / ₁₆ " x 50"	119	LAD-TRS-60-2-P	LAD-TRS-60-2-G
3	58°	24" x 21" x 30"	29½" x 50 ⁷ / ₁₆ " x 60"	138	LAD-TRS-60-3-P	LAD-TRS-60-3-G
4	58°	24" x 21" x 40"	29½" x 55 ³ / ₄ " x 70"	169	LAD-TRS-60-4-P	LAD-TRS-60-4-G
5	58°	24" x 21" x 50"	29½" x 62" x 80"	200	LAD-TRS-60-5-P	LAD-TRS-60-5-G
6	58°	24" x 21" x 60"	29½" x 68 ¹ / ₄ " x 90"	226	LAD-TRS-60-6-P	LAD-TRS-60-6-G
NON-STRADDLE DESIGN					PERFORATED STEPS	GRIP STRUT STEPS
2	50°	24" x 14" x 20"	29½" x 30 ¹⁵ / ₁₆ " x 50"	96	LAD-TRN-50-2-P	LAD-TRN-50-2-G
3	50°	24" x 14" x 30"	29½" x 38½" x 60"	116	LAD-TRN-50-3-P	LAD-TRN-50-3-G
4	50°	24" x 14" x 40"	29½" x 47" x 70"	147	LAD-TRN-50-4-P	LAD-TRN-50-4-G
5	50°	24" x 14" x 50"	29½" x 55½" x 80"	178	LAD-TRN-50-5-P	LAD-TRN-50-5-G
6	50°	24" x 14" x 60"	29½" x 63 ³ / ₈ " x 90"	204	LAD-TRN-50-6-P	LAD-TRN-50-6-G
2	58°	24" x 14" x 20"	29½" x 30 ¹ / ₈ " x 50"	97	LAD-TRN-60-2-P	LAD-TRN-60-2-G
3	58°	24" x 14" x 30"	29½" x 35 ¹³ / ₁₆ " x 60"	116	LAD-TRN-60-3-P	LAD-TRN-60-3-G
4	58°	24" x 14" x 40"	29½" x 42 ¹ / ₁₆ " x 70"	147	LAD-TRN-60-4-P	LAD-TRN-60-4-G
5	58°	24" x 14" x 50"	29½" x 48 ³ / ₁₆ " x 80"	178	LAD-TRN-60-5-P	LAD-TRN-60-5-G
6	58°	24" x 14" x 60"	29½" x 54 ⁵ / ₁₆ " x 90"	204	LAD-TRN-60-6-P	LAD-TRN-60-6-G
FDA COMPLIANT FINISH NON-STRADDLE DESIGN					PERFORATED STEPS	
2	58°	24" x 14" x 20"	29½" x 33 ¹¹ / ₁₆ " x 50"	98	LAD-TRN-60-2-FDA	
3	58°	24" x 14" x 30"	29½" x 34 ¹ / ₁₆ " x 60"	116	LAD-TRN-60-3-FDA	
4	58°	24" x 14" x 40"	29½" x 40 ³ / ₈ " x 70"	147	LAD-TRN-60-4-FDA	
5	58°	24" x 14" x 50"	29½" x 46 ⁵ / ₈ " x 80"	178	LAD-TRN-60-5-FDA	



model LAD-RAF-6-P



Roll-A-Fold Ladders

Portable ladder conveniently folds for storage. Constructed of square tubing framework which, handles uniform capacities up to 350 lbs. Features 30" high removable hand railing, with 12 step models featuring a 36" removable hand railing, 14" deep top platform, and a baked-in powder-coated toughness (11 and 12 step units are painted). Also features a 58° climb angle with the EZ models featuring a 50° climb angle. Each step measures 16¹³/₁₆" wide by 7" deep and is spaced 10" apart. Models with 8 - 12 steps have steps that measure 23³/₁₆" wide. Unit rolls around on two large 10" x 2¹/₂" hard rubber wheels. Units are shipped crated, some assembly required. Complies with ANSI A14.7 and OSHA 1910.29 specifications.

NO. OF STEPS	TOP STEP HEIGHT	OVERALL (W x D x H)	WEIGHT (POUND)	MODEL NUMBER	
				PERFORATED STEPS	MODE NUMBER GRIP STRUT STEPS
4	40"	28" x 41 ¹ / ₂ " x 70"	190	LAD-RAF-4-P	LAD-RAF-4-G
5	50"	28" x 47 ⁵ / ₈ " x 80"	225	LAD-RAF-5-P	LAD-RAF-5-G
6	60"	28" x 53 ³ / ₄ " x 90"	226	LAD-RAF-6-P	LAD-RAF-6-G
7	70"	28" x 60 ⁵ / ₈ " x 100"	266	LAD-RAF-7-P	LAD-RAF-7-G
8	80"	34 ¹ / ₄ " x 66 ³ / ₈ " x 110"	328	LAD-RAF-8-24-P	LAD-RAF-8-24-G
9	90"	34 ¹ / ₄ " x 72 ⁹ / ₁₆ " x 120"	344	LAD-RAF-9-24-P	LAD-RAF-9-24-G
10	100"	34 ¹ / ₄ " x 78 ⁷ / ₈ " x 130"	335	LAD-RAF-10-24-P	LAD-RAF-10-24-G
11	110"	34 ¹ / ₄ " x 85 ¹ / ₈ " x 140"	390	LAD-RAF-11-24-P	LAD-RAF-11-24-G
12	120"	34 ¹ / ₄ " x 91" x 156"	420	LAD-RAF-12-24-P	LAD-RAF-12-24-G
4	40"	28" x 45 ¹³ / ₁₆ " x 70"	192	LAD-RAF-4-P-EZ	LAD-RAF-4-G-EZ
5	50"	28" x 54 ⁵ / ₁₆ " x 80"	225	LAD-RAF-5-P-EZ	LAD-RAF-5-G-EZ
6	60"	28" x 64 ⁵ / ₈ " x 90"	234	LAD-RAF-6-P-EZ	LAD-RAF-6-G-EZ
7	70"	28" x 70 ¹³ / ₁₆ " x 100"	271	LAD-RAF-7-P-EZ	LAD-RAF-7-G-EZ
8	80"	34 ¹ / ₄ " x 77" x 110"	330	LAD-RAF-8-24-P-EZ	LAD-RAF-8-24-G-EZ
9	90"	34 ¹ / ₄ " x 89 ⁵ / ₈ " x 120"	352	LAD-RAF-9-24-P-EZ	LAD-RAF-9-24-G-EZ
10	100"	34 ¹ / ₄ " x 95 ¹³ / ₁₆ " x 130"	335	LAD-RAF-10-24-P-EZ	LAD-RAF-10-24-G-EZ
11	110"	34 ¹ / ₄ " x 102 ³ / ₄ " x 140"	401	LAD-RAF-11-24-P-EZ	LAD-RAF-11-24-G-EZ
12	120"	34 ¹ / ₄ " x 113 ⁵ / ₁₆ " x 156"	429	LAD-RAF-12-24-P-EZ	LAD-RAF-12-24-G-EZ



Ladder Tool Tray

The Ladder Tool Tray is a universal tool tray that fits different style ladders. This easy bolt-on option measures 10⁵/₁₆" in length with a height of 3³/₈". Width of tool tray options for each ladder are available. Baked-in powder-coated toughness.



MODEL NUMBER	FINISH	OVERALL SIZE (W x L x H)	LADDER MODEL COMPATIBILITY	WEIGHT (POUND)
LAD-TT-A	BLUE	19 ⁵ / ₈ " x 10 ⁵ / ₁₆ " x 3 ¹ / ₈ "	LAD-RAF**, LAD-RAF-EZ**, LAD-PW-18	11
LAD-TT-B	BLUE	26 ³ / ₈ " x 10 ⁵ / ₁₆ " x 3 ¹ / ₈ "	LAD-MM, LAD-TRN, LAD-PW-26, LAD-RAF*, LAD-RAF-EZ*	14
LAD-TT-C	BLUE	33 ¹ / ₁₆ " x 10 ⁵ / ₁₆ " x 3 ¹ / ₈ "	LAD-PW-32	17
LAD-TT-D	FDA WHITE	26 ³ / ₈ " x 10 ⁵ / ₁₆ " x 3 ¹ / ₈ "	LAD-TRN-FDA	14
LAD-TT-E	ESD BLACK	26 ³ / ₈ " x 10 ⁵ / ₁₆ " x 3 ¹ / ₈ "	LAD-PW-26-X-G-ESD	14

* ONLY WORKS WITH STEPS 8 TO 12
 ** ONLY WORKS WITH STEPS 4 TO 7

Commercial Spring Loaded Ladders

Commercial users of rolling ladders now have an attractive and economical alternative to the traditional warehouse rolling ladders. This sleek design also provides maximum safety and convenience. The all directional spring-loaded swivel casters feature steel dome protection and include rubber pad bottoms to minimize movement. Climb angle is 58°. The top step is 16" wide by 11" deep, while the remaining steps measure 16" wide by 8" deep. The baked-in powder-coated toughness provides durable attractive appearance. Uniform capacity is 300 pounds.



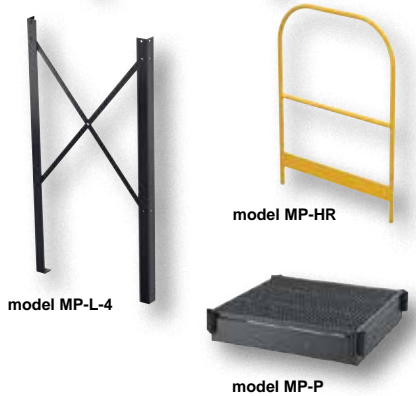
Spring-loaded swivel casters are protected by a steel dome with rubber bottom pads for extra grip.

NUMBER OF STEPS	STEP TYPE	TOP STEP HEIGHT	OVERALL (W x D x H)	WEIGHT (POUND)	MODEL NUMBER		
					YELLOW	BLUE	WHITE
1	RUBBER	9 ¹ / ₂ "	21 ¹ / ₈ " x 16 ¹ / ₈ " x 9 ¹ / ₂ "	21	LAD-1-Y	LAD-1-B	LAD-1-W
2	RUBBER	18 ¹ / ₂ "	21 ¹ / ₈ " x 20 ¹ / ₄ " x 18 ¹ / ₂ "	26	LAD-2-Y	LAD-2-B	LAD-2-W
3	RUBBER	28 ¹¹ / ₁₆ "	21 ¹ / ₈ " x 25 ⁹ / ₁₆ " x 63 ⁷ / ₁₆ "	90	LAD-3-Y	LAD-3-B	LAD-3-W
4	RUBBER	38 ³ / ₁₆ "	21 ¹ / ₈ " x 31 ¹³ / ₁₆ " x 72 ¹⁵ / ₁₆ "	94	LAD-4-Y	LAD-4-B	LAD-4-W
5	RUBBER	47 ¹¹ / ₁₆ "	21 ¹ / ₈ " x 38 ¹ / ₁₆ " x 82 ⁷ / ₁₆ "	96	LAD-5-Y	LAD-5-B	LAD-5-W
1	PERFORATED	9 ¹ / ₂ "	21 ¹ / ₈ " x 16 ¹ / ₈ " x 9 ¹ / ₂ "	21	LAD-1-Y-P	LAD-1-B-P	LAD-1-W-P
2	PERFORATED	18 ¹ / ₂ "	21 ¹ / ₈ " x 20 ¹ / ₄ " x 18 ¹ / ₂ "	26	LAD-2-Y-P	LAD-2-B-P	LAD-2-W-P
3	PERFORATED	28 ¹¹ / ₁₆ "	21 ¹ / ₈ " x 25 ⁹ / ₁₆ " x 63 ⁷ / ₁₆ "	90	LAD-3-Y-P	LAD-3-B-P	LAD-3-W-P
4	PERFORATED	38 ³ / ₁₆ "	21 ¹ / ₈ " x 31 ¹³ / ₁₆ " x 72 ¹⁵ / ₁₆ "	94	LAD-4-Y-P	LAD-4-B-P	LAD-4-W-P
5	PERFORATED	47 ¹¹ / ₁₆ "	21 ¹ / ₈ " x 38 ¹ / ₁₆ " x 82 ⁷ / ₁₆ "	96	LAD-5-Y-P	LAD-5-B-P	LAD-5-W-P

Modular Steel Work Platform System

This Modular Work Platform System can be configured to fit any application. Platform legs have a fixed height and provide stability to the entire modular unit. Designed for maximum loading capacity of 500 pounds. Stair / platform configuration has a maximum capacity of 1,000 pounds. Fixed height ladder sections attach to platform. Individual grip steps are 23-9/16" wide by 7" deep with 10" step spacing. Each ladder section includes round tube handrails. Each handrail section has a midrail and 4" toeboard. Constructed of industrial grade welded steel with a powder coat finish. Meets OSHA specification 1910.23. Hardware is included for easy assembly. Concrete wedge anchors available for securing unit to floor. All components are sold separately. Survey sheet available on page G19.

MODEL NUMBER	DESCRIPTION	PLATFORM HEIGHT	WEIGHT (POUND)
MP-S-2	Stair Step Section with Handrails, 2 steps	30"	102
MP-S-3	Stair Step Section with Handrails, 3 steps	40"	117
MP-S-4	Stair Step Section with Handrails, 4 steps	50"	150
MP-S-5	Stair Step Section with Handrails, 5 steps	60"	187
MP-S-6	Stair Step Section with Handrails, 6 steps	70"	211
MP-P	Fixed-Height Platform 36" x 36" - no handrail	10"	66
MP-L-2	Fixed-Height Platform Support Legs - one pair	30"	33
MP-L-3	Fixed-Height Platform Support Legs - one pair	40"	49
MP-L-4	Fixed-Height Platform Support Legs - one pair	50"	65
MP-L-5	Fixed-Height Platform Support Legs - one pair	60"	81
MP-L-6	Fixed-Height Platform Support Legs - one pair	70"	99
MP-HR	Handrail with Toeboard, 36"L x 42"H, sold each		75
AS-383	3/8" x 3"L Concrete Wedge Anchor, sold each		1
AS-383-4PK	3/8" x 3"L Concrete Wedge Anchor, 4 pack		4



Modular Style Stairway

Attractive Modular Style Stairway is economical and easily assembled. Steps are 36" wide with non-skid grip strut, which bolt in place and are baked-in powder-coated toughness. Standard climb angle is 31°. Customer must provide their landing height at time of purchase. Handrails and side rails bolt together. The handrail tubing has a powder coat yellow finish. Units meet OSHA requirements and unit ships disassembled. Concrete Anchoring Hardware available, see page A38. Survey sheet available on page G17.

MODEL NUMBER	NUMBER OF STEPS	HEIGHT	UNIFORM CAPACITY	WEIGHT (POUND)
STAIR-36	5	36"	1,000 lb.	310
STAIR-48	6	48"	1,000 lb.	432
STAIR-60	8	60"	1,000 lb.	450
STAIR-72	10	72"	1,000 lb.	592
STAIR-84	12	84"	1,000 lb.	693
STAIR-96	13	96"	1,000 lb.	781
STAIR-108	15	108"	1,000 lb.	870
STAIR-120	16	120"	1,000 lb.	922
STAIR-132	18	132"	1,000 lb.	963
STAIR-144	20	144"	1,000 lb.	1006



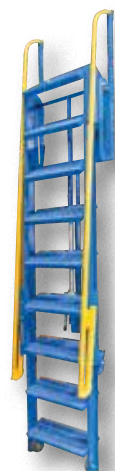
Mezzanine Ladders (face mounted/retractable)

The Mezzanine Ladders are ratcheted into climbing angle and back into stored position. The wheels roll on the ground when ratcheted and the handrails mechanically rise into climb position when ladder locks into position. Quickly extend and retract the ladder. The mezzanine ladder allows for quick installation with mounting bracket provided for bolt-on installation or welded installation. Steps are 24" wide. Minimum mezzanine height is 60". Maximum mezzanine height is 128". Collapsed distance from wall is approximately 15½" for all models. Customer must provide their mezzanine height at time of purchase. Baked-in powder-coated toughness. Meets or exceeds all OSHA requirements. Ships knockdown, some assembly required. Survey sheet available on page G18.

MODEL NUMBER	MEZZANINE HEIGHT	UNIFORM CAPACITY	INCLINE ANGLE	WEIGHT (POUND)
LAD-FM-60	60"	350 lb.	58°	257
LAD-FM-72	72"	350 lb.	58°	282
LAD-FM-84	84"	350 lb.	58°	307
LAD-FM-96	96"	350 lb.	58°	332
LAD-FM-108	108"	350 lb.	58°	357
LAD-FM-120	120"	350 lb.	58°	382

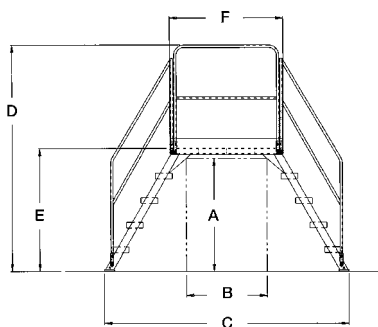


series LAD-FM





model COL-4-36-44



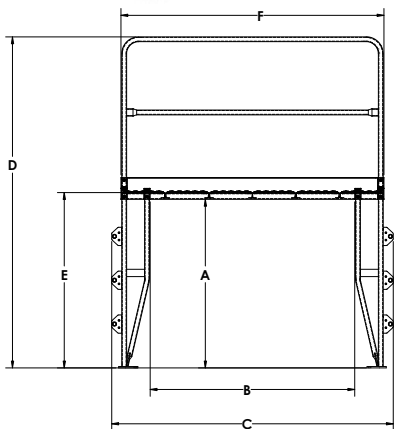
Cross-Over Ladders

Mount where you need permanent access at crossover points. The upper platform features removable two sided 42 $\frac{3}{8}$ " high handrail with 21" mid-rail and fixed 4" toeboards to prevent objects from rolling off. Serrated steps for extra grip and safety are 23 $\frac{1}{2}$ " wide and 7" deep with a step spacing of 10". The angle of the steps is 58°. The overall ladder width is 29 $\frac{1}{4}$ ". Ground legs include floor mounting pads. Units must be anchored to the floor. Units are all steel construction and can be knock-down for storage and shipping. Uniform capacity is 500 pounds. Meets ANSI A14.7 and OSHA 29 CFR 1910.24. Baked-in powder-coated toughness.

MODEL NUMBER	NUMBER OF STEPS	A	B	C	D	E	F	WEIGHT (POUND)
COL-3-26-14	3	28 $\frac{1}{4}$ "	14 $\frac{1}{8}$ "	54 $\frac{1}{2}$ "	72 $\frac{7}{8}$ "	30"	24"	264
COL-3-26-23	3	28 $\frac{1}{4}$ "	26 $\frac{1}{8}$ "	66 $\frac{1}{2}$ "	72 $\frac{7}{8}$ "	30"	36"	282
COL-3-26-33	3	28 $\frac{1}{4}$ "	38 $\frac{1}{8}$ "	78 $\frac{1}{2}$ "	72 $\frac{7}{8}$ "	30"	48"	315
COL-3-26-44	3	28 $\frac{1}{4}$ "	50 $\frac{1}{8}$ "	90 $\frac{1}{2}$ "	73"	30"	60"	349
COL-4-36-14	4	38 $\frac{1}{4}$ "	14 $\frac{1}{8}$ "	67"	82 $\frac{7}{8}$ "	40"	24"	282
COL-4-36-23	4	38 $\frac{1}{4}$ "	26 $\frac{1}{8}$ "	79"	82 $\frac{7}{8}$ "	40"	36"	317
COL-4-36-33	4	38 $\frac{1}{4}$ "	38 $\frac{1}{8}$ "	91"	82 $\frac{7}{8}$ "	40"	48"	323
COL-4-36-44	4	38 $\frac{1}{4}$ "	50 $\frac{1}{8}$ "	103"	83"	40"	60"	378
COL-5-46-14	5	48 $\frac{1}{4}$ "	14 $\frac{1}{8}$ "	79 $\frac{1}{2}$ "	92 $\frac{7}{8}$ "	50"	24"	306
COL-5-46-23	5	48 $\frac{1}{4}$ "	26 $\frac{1}{8}$ "	91 $\frac{1}{2}$ "	92 $\frac{7}{8}$ "	50"	36"	346
COL-5-46-33	5	48 $\frac{1}{4}$ "	38 $\frac{1}{8}$ "	103 $\frac{1}{2}$ "	92 $\frac{7}{8}$ "	50"	48"	349
COL-5-46-44	5	48 $\frac{1}{4}$ "	50 $\frac{1}{8}$ "	115 $\frac{1}{2}$ "	93"	50"	60"	404
COL-6-56-14	6	58 $\frac{1}{4}$ "	14 $\frac{1}{8}$ "	92"	102 $\frac{7}{8}$ "	60"	24"	348
COL-6-56-23	6	58 $\frac{1}{4}$ "	26 $\frac{1}{8}$ "	104"	102 $\frac{7}{8}$ "	60"	36"	398
COL-6-56-33	6	58 $\frac{1}{4}$ "	38 $\frac{1}{8}$ "	116"	102 $\frac{7}{8}$ "	60"	48"	401
COL-6-56-44	6	58 $\frac{1}{4}$ "	50 $\frac{1}{8}$ "	128"	103"	60"	60"	460

Cross-Over Vertical Ladders

Mount where you need permanent access at crossover points. The upper platform features removable two sided 42 $\frac{3}{8}$ " high handrail with 21" mid-rail and fixed 4" toeboards to prevent objects from rolling off. Platform size is 23-9/16". Serrated steps for extra grip and safety are 23-9/16" wide and 7" deep with a step spacing of 12". Ground legs include floor mounting pads. Units must be anchored to the floor. Units are all steel construction and can be knock-down for storage and shipping. Uniform capacity is 500 pounds. Meets OSHA 29 CFR 1910.27. Baked-in powder-coated toughness.



MODEL NUMBER	NUMBER OF STEPS	A	B	C	D	E	F	WEIGHT (POUND)
COLV-3-34-8	3	34 $\frac{3}{16}$ "	8"	29"	78 $\frac{5}{8}$ "	36"	24"	198
COLV-3-34-20	3	34 $\frac{3}{16}$ "	20"	41"	78 $\frac{5}{8}$ "	36"	36"	232
COLV-3-34-32	3	34 $\frac{3}{16}$ "	32"	53"	78 $\frac{5}{8}$ "	36"	48"	267
COLV-3-34-44	3	34 $\frac{3}{16}$ "	44"	65"	78 $\frac{5}{8}$ "	36"	60"	301
COLV-3-34-56	3	34 $\frac{3}{16}$ "	56"	77"	78 $\frac{5}{8}$ "	36"	72"	163
COLV-4-46-8	4	46 $\frac{3}{16}$ "	8"	29"	90 $\frac{5}{8}$ "	48"	24"	183
COLV-4-46-20	4	46 $\frac{3}{16}$ "	20"	41"	90 $\frac{5}{8}$ "	48"	36"	217
COLV-4-46-32	4	46 $\frac{3}{16}$ "	32"	53"	90 $\frac{5}{8}$ "	48"	48"	252
COLV-4-46-44	4	46 $\frac{3}{16}$ "	44"	65"	90 $\frac{5}{8}$ "	48"	60"	286
COLV-4-46-56	4	46 $\frac{3}{16}$ "	56"	77"	90 $\frac{5}{8}$ "	48"	72"	321
COLV-5-58-8	5	58 $\frac{3}{16}$ "	8"	29"	102 $\frac{5}{8}$ "	60"	24"	202
COLV-5-58-20	5	58 $\frac{3}{16}$ "	20"	41"	102 $\frac{5}{8}$ "	60"	36"	237
COLV-5-58-32	5	58 $\frac{3}{16}$ "	32"	53"	102 $\frac{5}{8}$ "	60"	48"	271
COLV-5-58-44	5	58 $\frac{3}{16}$ "	44"	65"	102 $\frac{5}{8}$ "	60"	60"	306
COLV-5-58-56	5	58 $\frac{3}{16}$ "	56"	77"	102 $\frac{5}{8}$ "	60"	72"	340
COLV-6-70-8	6	70 $\frac{3}{16}$ "	8"	29"	114 $\frac{5}{8}$ "	72"	24"	222
COLV-6-70-20	6	70 $\frac{3}{16}$ "	20"	41"	114 $\frac{5}{8}$ "	72"	36"	256
COLV-6-70-32	6	70 $\frac{3}{16}$ "	32"	53"	114 $\frac{5}{8}$ "	72"	48"	291
COLV-6-70-44	6	70 $\frac{3}{16}$ "	44"	65"	114 $\frac{5}{8}$ "	72"	60"	323
COLV-6-70-56	6	70 $\frac{3}{16}$ "	56"	77"	114 $\frac{5}{8}$ "	72"	72"	360
COLV-7-82-8	7	82 $\frac{3}{16}$ "	8"	29"	126 $\frac{5}{8}$ "	84"	24"	244
COLV-7-82-20	7	82 $\frac{3}{16}$ "	20"	41"	126 $\frac{5}{8}$ "	84"	36"	279
COLV-7-82-32	7	82 $\frac{3}{16}$ "	32"	53"	126 $\frac{5}{8}$ "	84"	48"	313
COLV-7-82-44	7	82 $\frac{3}{16}$ "	44"	65"	126 $\frac{5}{8}$ "	84"	60"	348
COLV-7-82-56	7	82 $\frac{3}{16}$ "	56"	77"	126 $\frac{5}{8}$ "	84"	72"	382

Alternating Step Cross-Over Ladders

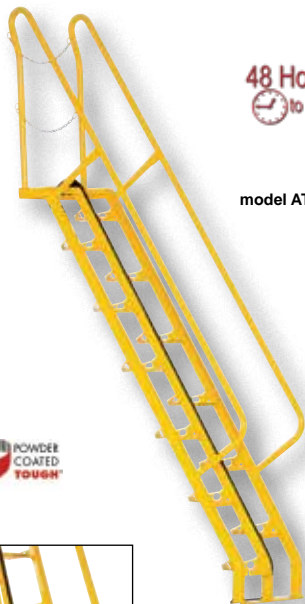
Mount where you need permanent access at crossover points. Alternating step design for shorter overall span than other units. The upper platform features removable two sided 42" high handrail with 21" mid-rail and fixed 4" toeboards to prevent objects from rolling off. Usable width is 19¾" between handrails. Heavy-duty uniform capacity rating of 350 pounds per unit. Includes lag-down points for securing to floor. Steel construction with baked-in powder-coated toughness. Ships knockdown. Meets ANSI A14.7 and OSHA STD 01-01-011 standards.



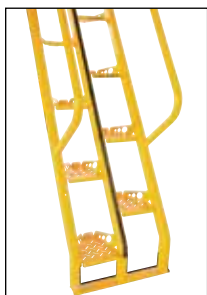
USE LESS FLOOR SPACE



MODEL NUMBER	NUMBER OF STEPS	OVERALL HEIGHT	CLEAR HEIGHT	CLEAR SPAN	OVERALL SPAN	STEP ANGLE	WEIGHT (POUND)
COLA-2-56-20	4	73"	26"	21½"	79"	56°	324
COLA-2-56-32	4	73"	26"	28½"	86"	56°	357
COLA-2-56-44	4	73"	26"	35½"	93"	56°	390
COLA-2-56-56	4	73"	26"	49½"	107"	56°	423
COLA-2-68-20	4	73"	26"	19½"	66"	68°	296
COLA-2-68-32	4	73"	26"	26½"	73"	68°	329
COLA-2-68-44	4	73"	26"	33½"	80"	68°	362
COLA-2-68-56	4	73"	26"	47½"	94"	68°	396
COLA-3-56-20	5	81"	34"	21½"	90"	56°	324
COLA-3-56-32	5	81"	34"	28½"	97"	56°	357
COLA-3-56-44	5	81"	34"	35½"	104"	56°	390
COLA-3-56-56	5	81"	34"	49½"	118"	56°	423
COLA-3-68-20	5	81"	34"	19½"	66"	68°	296
COLA-3-68-32	5	81"	34"	26½"	73"	68°	329
COLA-3-68-44	5	81"	34"	33½"	80"	68°	362
COLA-3-68-56	5	81"	34"	47½"	94"	68°	363
COLA-4-56-20	7	91"	45"	21½"	90"	56°	324
COLA-4-56-32	7	91"	45"	28½"	97"	56°	357
COLA-4-56-44	7	91"	45"	35½"	104"	56°	390
COLA-4-56-56	7	91"	45"	49½"	118"	56°	423
COLA-4-68-20	7	91"	45"	19½"	67"	68°	353
COLA-4-68-32	7	91"	45"	26½"	74"	68°	361
COLA-4-68-44	7	91"	45"	33½"	81"	68°	362
COLA-4-68-56	7	91"	45"	47½"	95"	68°	396
COLA-5-56-20	8	103"	57"	21½"	106"	56°	401
COLA-5-56-32	8	103"	57"	28½"	113"	56°	413
COLA-5-56-44	8	103"	57"	35½"	120"	56°	424
COLA-5-56-56	8	103"	57"	49½"	134"	56°	456
COLA-5-68-20	8	103"	57"	19½"	77"	68°	363
COLA-5-68-32	8	103"	57"	26½"	84"	68°	387
COLA-5-68-44	8	103"	57"	33½"	91"	68°	388
COLA-5-68-56	8	103"	57"	47½"	105"	68°	430
COLA-6-56-20	10	115"	69"	21½"	122"	56°	427
COLA-6-56-32	10	115"	69"	28½"	129"	56°	429
COLA-6-56-44	10	115"	69"	35½"	136"	56°	462
COLA-6-56-56	10	115"	69"	49½"	150"	56°	458
COLA-6-68-20	10	115"	69"	19½"	87"	68°	366
COLA-6-68-32	10	115"	69"	26½"	94"	68°	372
COLA-6-68-44	10	115"	69"	33½"	101"	68°	431
COLA-6-68-56	10	115"	69"	47½"	115"	68°	464
COLA-7-56-20	12	127"	81"	21½"	138"	56°	433
COLA-7-56-32	12	127"	81"	28½"	145"	56°	466
COLA-7-56-44	12	127"	81"	35½"	152"	56°	499
COLA-7-56-56	12	127"	81"	49½"	166"	56°	522
COLA-7-68-20	12	127"	81"	19½"	96"	68°	400
COLA-7-68-32	12	127"	81"	26½"	103"	68°	475
COLA-7-68-44	12	127"	81"	33½"	110"	68°	444
COLA-7-68-56	12	127"	81"	47½"	124"	68°	499



model ATS-8-56



Alternating-Tread Stairs

Alternating-Tread Step design offers a shorter span than traditional steps. Features handrail on each side of unit, dual safety chain at the top of the stair, and formed steel steps with raised surfaces for better traction. Welded steel construction with bolt-on handrails. Baked-in powder-coated toughness. Ships knockdown for lower freight costs.

MODEL NUMBER	NUMBER OF STEPS	TOP STEP HEIGHT	LENGTH	STEP ANGLE	UNIFORM CAPACITY	WEIGHT (POUND)
ATS-4-56	7	48 ¹ / ₈ "	36 ¹ / ₂ "	56°	350 lb.	138
ATS-5-56	8	60 ¹ / ₈ "	44 ⁵ / ₈ "	56°	350 lb.	206
ATS-6-56	10	72 ¹ / ₈ "	52 ³ / ₄ "	56°	350 lb.	214
ATS-7-56	12	84 ¹ / ₈ "	60 ³ / ₄ "	56°	350 lb.	229
ATS-8-56	13	96 ¹ / ₈ "	68 ⁷ / ₈ "	56°	350 lb.	240
ATS-9-56	15	108 ³ / ₈ "	77 ¹ / ₄ "	56°	350 lb.	255
ATS-10-56	16	120 ¹ / ₈ "	85 ¹ / ₈ "	56°	350 lb.	261
ATS-11-56	17	131 ⁷ / ₈ "	93"	56°	350 lb.	299
ATS-12-56	20	143 ⁷ / ₈ "	101 ¹ / ₈ "	56°	350 lb.	330
ATS-13-56	21	156 ³ / ₈ "	109 ⁵ / ₈ "	56°	350 lb.	392
ATS-14-56	24	168 ¹ / ₈ "	117 ¹ / ₂ "	56°	350 lb.	406
ATS-4-68	7	48 ¹ / ₈ "	26 ¹ / ₄ "	68°	350 lb.	145
ATS-5-68	8	60 ¹ / ₈ "	31 ¹ / ₈ "	68°	350 lb.	162
ATS-6-68	10	72 ¹ / ₈ "	35 ⁵ / ₈ "	68°	350 lb.	222
ATS-7-68	12	84 ¹ / ₈ "	40 ³ / ₄ "	68°	350 lb.	228
ATS-8-68	13	96 ¹ / ₈ "	45 ⁵ / ₈ "	68°	350 lb.	235
ATS-9-68	15	108 ¹ / ₈ "	50 ¹ / ₂ "	68°	350 lb.	260
ATS-10-68	16	120 ¹ / ₈ "	55 ¹ / ₄ "	68°	350 lb.	285
ATS-11-68	17	131 ⁷ / ₈ "	60 ¹ / ₈ "	68°	350 lb.	327
ATS-12-68	20	143 ⁷ / ₈ "	64 ⁷ / ₈ "	68°	350 lb.	331
ATS-13-68	21	156 ³ / ₈ "	70"	68°	350 lb.	397
ATS-14-68	24	168 ¹ / ₈ "	74 ³ / ₄ "	68°	350 lb.	452



Tank Access Ladders

The NTAL Tank Access Ladders has a unique modular design for inspecting storage tanks. The rungs are offset to protect knuckles and are made from non-slip steel material. This ladder has a durable welded steel construction and a baked-in powder-coated toughness. Models with 10 to 15 rungs ship knockdown.

MODEL NUMBER	OVERALL HEIGHT (FT.)	NUMBER OF RUNGS	OVERALL WIDTH	USABLE WIDTH	WEIGHT (POUND)
NTAL-7	7	7	14"	13"	69
NTAL-10	10	10	14"	13"	128
NTAL-12	12	12	14"	13"	138
NTAL-15	15	15	14"	13"	148

Walk-Thru Style Dock Ladders

Prevent needless dock injuries with Walk-Thru Style Dock Ladders. Constructed of steel pipe. Mount ladder directly to the dock face by either welding or bolting on. The top half of each step is covered with a slip resistant material for extra safety during climbing and descending of the ladder. The extra high handrail provides maximum assistance and safety. All ladders project 8³/₈" out from face of dock. Models with 5 - 10 steps ship knockdown. Some assembly required. Baked-in powder-coated toughness.

MODEL NUMBER	OVERALL SIZE (W x H)	NUMBER OF RUNGS	TOP STEP HEIGHT	WIDTH OF STEP	DISTANCE BETWEEN STEP	WEIGHT (POUND)
DKL-2	20 ⁷ / ₁₆ " x 65 ¹ / ₂ "	2	12"	18"	12"	60
DKL-3	20 ⁷ / ₁₆ " x 77 ¹ / ₂ "	3	24"	18"	12"	65
DKL-4	20 ⁷ / ₁₆ " x 89 ¹ / ₂ "	4	36"	18"	12"	70
DKL-5	20 ⁷ / ₁₆ " x 101 ¹ / ₂ "	5	48"	18"	12"	88
DKL-6	20 ⁷ / ₁₆ " x 113 ¹ / ₂ "	6	60"	18"	12"	112
DKL-7	20 ⁷ / ₁₆ " x 125 ¹ / ₂ "	7	72"	18"	12"	118
DKL-8	20 ⁷ / ₁₆ " x 137 ¹ / ₂ "	8	84"	18"	12"	121
DKL-9	20 ⁷ / ₁₆ " x 149 ¹ / ₂ "	9	96"	18"	12"	123
DKL-10	20 ⁷ / ₁₆ " x 161 ¹ / ₂ "	10	108"	18"	12"	130

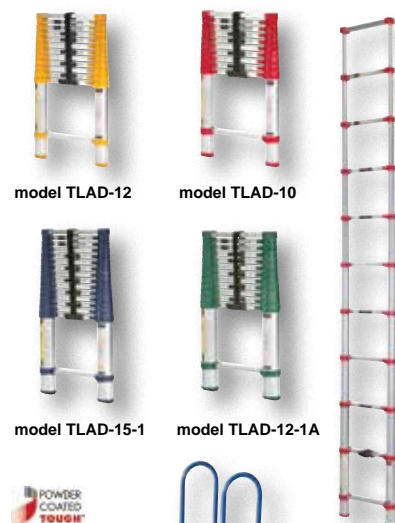
POWDER COATED TOUGH



Aluminum Telescopic Ladders

Ideal when storage space is limited. The lightweight and low profile design allows for storage in closets or tight spaces. Each step is serrated and has a spring loaded locking pin that automatically engages to secure step height. The release mechanism provides a smooth automatic closing design. These ladders extend in 12" increments. Top bumper guards and molded rubber feet protect walls and floors against scratches. Meets OSHA and ANSI specifications.

MODEL NUMBER	TOP STEP HEIGHT	CLOSED SIZE (W x D x H)	STEP DEPTH	UNIFORM CAPACITY	WEIGHT (POUND)
TLAD-10 [Ⓢ]	6 in. - 10 ft.	18½" x 2¾" x 29"	1½"	225 lb.	24
TLAD-12 [Ⓢ]	6 in. - 12 ft.	19¼" x 3½" x 32"	1½"	225 lb.	30
TLAD-12-1A	6 in. - 12 ft.	18" x 4" x 32"	1½"	300 lb.	36
TLAD-15-1	6 in. - 15 ft.	19" x 4" x 36"	1½"	250 lb.	40



model TLAD-12

model TLAD-10

model TLAD-15-1

model TLAD-12-1A

Folding Ladders with Wheels

Locking foldable design saves on storage space when ladder is not in use. Ladder folds after unlocking one spring-loaded detent pin. Once unit is folded, tilt back on wheels for easy portability. Available in either carbon steel or stainless steel. The steps are perforated to provide a non-slip surface. The ladders have 7" deep steps and a climb angle of 58°. Stainless steel models are a 202 grade. Complies with ANSI 14.7 and OSHA 1910.29 specifications.

NUMBER OF STEPS	TOP STEP HEIGHT	UNIFORM CAPACITY	WEIGHT (POUND)	MODEL NUMBER	
				CARBON STEEL	STAINLESS STEEL
2	20"	350 lb.	31	FLAD-2 [Ⓢ]	FLAD-2-SS [Ⓢ]
3	30"	350 lb.	39	FLAD-3 [Ⓢ]	FLAD-3-SS [Ⓢ]
4	40"	350 lb.	47	FLAD-4 [Ⓢ]	FLAD-4-SS [Ⓢ]



model FLAD-2

48 Hours
to Ship

POWDER COATED
TOUGH!

CARBON STEEL

STAINLESS STEEL

Aluminum Ladder/Carts

This well built Aluminum Ladder/Carts are great for home, office, or store. Rugged aluminum construction is strong and lightweight. Converts in seconds from ladder to cart. Ladder uniform capacity is 300 lbs., while the hand truck uniform capacity is 130 lbs. Nose plate measures 15" wide. Units roll smoothly on 4" wheels.

MODEL NUMBER	NO. OF STEPS	OVERALL LADDER (W x D x H)	OVERALL CART (W x D x H)	OVERALL FOLDED SIZE (W x D x H)	WEIGHT (POUND)
C-130-2 [Ⓢ]	2	18½" x 20" x 37"	18½" x 14" x 39"	18½" x 3½" x 39"	17
C-130-3 [Ⓢ]	3	18½" x 29" x 47"	18½" x 18" x 50"	18½" x 3½" x 50"	22



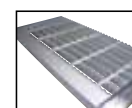
model C-130-2

model C-130-3

Aluminum Step Stands

Ideal for industrial or commercial applications. Strong design yields a uniform capacity of 500 pounds, but is lighter than comparable steel models. Open step design includes extra heavy duty serrated surface for traction. With rubber tipped legs, this step ladder is ideal for use on many types of floors. Complies with OSHA 1910.24 specifications.

RAW ALUMINUM FINISH					
MODEL NUMBER	STEPS	OVERALL SIZE (W x D x H)		ASSEMBLY	WEIGHT (POUND)
SSA-1	1	22 ¹³ / ₁₆ " x 14 ⁷ / ₈ " x 10 ⁷ / ₁₆ "		WELDED	13
SSA-1W	1	32 ¹³ / ₁₆ " x 14 ⁷ / ₈ " x 10 ⁷ / ₁₆ "		WELDED	13
SSA-2	2	22 ¹³ / ₁₆ " x 24 ⁹ / ₁₆ " x 20"		WELDED	14
SSA-2W	2	32 ¹³ / ₁₆ " x 24 ⁹ / ₁₆ " x 20"		WELDED	19
SSA-3	3	22 ¹³ / ₁₆ " x 34 ⁹ / ₁₆ " x 20"		WELDED	27
SSA-3W	3	32 ¹³ / ₁₆ " x 34 ⁹ / ₁₆ " x 30"		WELDED	29
SSA-2-KD	2	22 ¹³ / ₁₆ " x 24 ⁹ / ₁₆ " x 20"		BOLT TOGETHER	14
SSA-2W-KD	2	32 ¹³ / ₁₆ " x 24 ⁹ / ₁₆ " x 20"		BOLT TOGETHER	19
SSA-3-KD	3	22 ¹³ / ₁₆ " x 34 ⁹ / ₁₆ " x 30"		BOLT TOGETHER	29
SSA-3W-KD	3	32 ¹³ / ₁₆ " x 34 ⁹ / ₁₆ " x 30"		BOLT TOGETHER	29
YELLOW POWDER COAT FINISH					
SSA-1-Y	1	22 ¹³ / ₁₆ " x 14 ⁷ / ₈ " x 10 ⁷ / ₁₆ "		WELDED	13
SSA-1W-Y	1	32 ¹³ / ₁₆ " x 14 ⁷ / ₈ " x 10 ⁷ / ₁₆ "		WELDED	13
SSA-2-Y	2	22 ¹³ / ₁₆ " x 24 ⁹ / ₁₆ " x 20"		WELDED	14
SSA-2W-Y	2	32 ¹³ / ₁₆ " x 24 ⁹ / ₁₆ " x 20"		WELDED	14
SSA-3-Y	3	22 ¹³ / ₁₆ " x 34 ⁹ / ₁₆ " x 20"		WELDED	27
SSA-3W-Y	3	32 ¹³ / ₁₆ " x 34 ⁹ / ₁₆ " x 30"		WELDED	30
SSA-2-KD-Y	2	22 ¹³ / ₁₆ " x 24 ⁹ / ₁₆ " x 20"		BOLT TOGETHER	14
SSA-2W-KD-Y	2	32 ¹³ / ₁₆ " x 24 ⁹ / ₁₆ " x 20"		BOLT TOGETHER	14
SSA-3-KD-Y	3	22 ¹³ / ₁₆ " x 34 ⁹ / ₁₆ " x 30"		BOLT TOGETHER	29
SSA-3W-KD-Y	3	32 ¹³ / ₁₆ " x 34 ⁹ / ₁₆ " x 30"		BOLT TOGETHER	29



New

POWDER COATED
TOUGH!



model SSA-3

model SSA-2-Y

model
FBTF-6Capacity:
300 lbs

Fiberglass Twin Front Ladders

Fiberglass Twin Front Ladders are made of non-conductive fiberglass industrial material. They are extra-heavy duty, capable of supporting 300 lb. uniform capacity. These ladders are equipped with slip resistant footing, heavy steel hinges, and inside spreader braces. Steps are on both sides of the ladder to make it easy for two people to work on the same project.

MODEL NUMBER	OVERALL HEIGHT (FT.)	BOTTOM WIDTH	STEP DEPTH	APPROXIMATE SPREAD	WEIGHT (POUND)
FBTF-4	4	19 ⁹ / ₁₆ "	3"	37 ¹ / ₂ "	18
FBTF-5	5	21 ¹ / ₁₆ "	3"	44 ⁷ / ₈ "	22
FBTF-6	6	22 ⁹ / ₁₆ "	3"	52 ⁵ / ₁₆ "	27
FBTF-7	7	24 ¹ / ₁₆ "	3"	59 ¹¹ / ₁₆ "	30
FBTF-8	8	25 ⁹ / ₁₆ "	3"	67 ¹ / ₈ "	34
FBTF-10	10	28 ⁹ / ₁₆ "	3"	81 ¹⁵ / ₁₆ "	44
FBTF-12	12	31 ⁹ / ₁₆ "	3"	96 ³ / ₄ "	62

Capacity:
300 lbsV-SHAPE DESIGN FOR
STABILITY ON CORNERS

Fiberglass Extension Ladders with Aluminum Rungs

These Extension Ladders feature the Pro Top and have a 300 lb. uniform capacity. They are equipped with the exclusive Rung Lock Quickclatch, a quick and easy locking method for securing sections when the ladder is extended. The ladder also has the premium feature of a full metal plate that is wrapped around the rail for protection and durability. Pro Top features V-shape design for stability on corners, and soft non-marking/non-marring rubber tread protects work surface.

MODEL NUMBER	OVERALL HEIGHT (FT.)	LENGTH EACH SECTION (FT.)	HEIGHT TO TOP STEP (FT.)	WEIGHT (POUND)
EXL-24	24	12	21	51
EXL-28	28	14	25	59
EXL-32	32	16	29	70

Fiberglass Step Ladders

Fiberglass Step Ladders are made of a non-conductive fiberglass industrial material. They are extra heavy duty, capable of supporting 300 lb. uniform capacity. These ladders are equipped with slip resistant footing and a non-conductive structural molded top with tool slots to help keep tools close at hand.

model FBSS-6

Capacity:
300 lbs

MODEL NUMBER	OVERALL HEIGHT (FT.)	BOTTOM WIDTH	STEP DEPTH	APPROXIMATE SPREAD	WEIGHT (POUND)
FBSS-4	4	19 ⁹ / ₁₆ "	3"	28 ¹⁵ / ₁₆ "	14
FBSS-5	5	21 ¹ / ₁₆ "	3"	34 ⁷ / ₈ "	17
FBSS-6	6	22 ⁹ / ₁₆ "	3"	40 ⁷ / ₈ "	20
FBSS-7	7	24 ¹ / ₁₆ "	3"	43 ¹³ / ₁₆ "	22
FBSS-8	8	25 ⁹ / ₁₆ "	3"	52 ³ / ₄ "	26
FBSS-10	10	28 ⁹ / ₁₆ "	3"	64 ¹¹ / ₁₆ "	34
FBSS-12	12	31 ⁹ / ₁₆ "	3"	76 ¹ / ₈ "	47

Fiberglass Industrial Step Stands

Fiberglass Industrial Step Stands fold easily for easy transport and storage. These step stands are non-conductive fiberglass heavy duty, multi-purpose industrial material, with a 300 lb. uniform capacity. Units include a large molded top and double rivet construction.



model FBSS-2

Capacity:
300 lbs

MODEL NUMBER	OVERALL HEIGHT (FT.)	TOP STEP HEIGHT	TOP SIZE (W x D)	WEIGHT (POUND)
FBSS-1	1	13"	14" x 9 ¹ / ₄ "	8
FBSS-2	2	22 ³ / ₄ "	14" x 9 ¹ / ₄ "	15
FBSS-3	3	34"	14" x 9 ¹ / ₄ "	20
FBSS-4	4	45 ¹ / ₄ "	14" x 9 ¹ / ₄ "	25

Aluminum Platform Ladders

These lightweight Aluminum Industrial Platform Ladders have a 375 lb. uniform capacity and are designed with extra heavy duty side rails. They also have a slip resistant platform and rubber feet. Top platform has a guard rail for added protection. These ladders meet the most demanding industrial and contracting applications.

MODEL NUMBER	OVERALL HEIGHT (FT.)	HEIGHT TO PLATFORM (FT.)	BOTTOM WIDTH	STEP DEPTH	APPROXIMATE SPREAD	WEIGHT (POUND)
PFSL-4	6	4	24¼"	3"	43¾"	23
PFSL-6	8	6	27¼"	3"	54¾"	30
PFSL-8	10	8	30¼"	3"	65¾"	40

Capacity:
375 lbs
model PFSL-4



Aluminum Industrial Step Stands

Aluminum Industrial Step Stands fold easily for easy transport and storage. Multi-purpose industrial step stand is lightweight and has a 300 lb. uniform capacity. Units include a large molded top and double rivet construction.

MODEL NUMBER	OVERALL HEIGHT (FT.)	TOP STEP HEIGHT	TOP SIZE (W x D)	WEIGHT (POUND)
AISS-1	1.083	11½"	14" x 9¼"	8
AISS-2	1.916	22¾"	14" x 9¼"	14
AISS-3	2.833	34"	14" x 9¼"	19
AISS-4	3.790	45¼"	14" x 9¼"	24

Capacity:
300 lbs
model AISS-2



Aluminum Folding Step Platforms

Perfect for getting that extra reach when pulling parts, painting, washing vehicles, or maintenance needs. Non-skid feet on each leg provides a secure grip. Will not mar expensive epoxy garage floors. Lightweight construction for easy transport. When not needed, the legs fold under the platform for easy storage. Platform size is 15¹/₁₆" wide by 35¹/₁₆" long. Uniform capacity is 250 lb.

MODEL NUMBER	OVERALL SIZE (W x L x H)**	OVERALL SIZE (W x L x H)*	WEIGHT (POUND)
AFSP-2	18¼" x 36½" x 5¼"	19 ¹ / ₁₆ " x 47 ⁷ / ₁₆ " x 19 ⁷ / ₁₆ "	17
AFSP-2-TT	18¼" x 36½" x 5¼"	19 ¹³ / ₁₆ " x 47¼" x 50 ⁵ / ₁₆ "	29

*WHEN IN USE / **FOLDED (EXCLUDING TOOL TRAY)



YART FOOT

48 Hours
to Ship

Portable Two-Step Ladders

Mobile two-step design for access to hard-to-reach places. Tubular steel construction. Two styles to choose from - rubber matting or perforated steel. Top step height is 20" and step measures 16" wide by 8" deep. Two rigid wheels allow for easy tilt and roll portability. Ships knock down for lower shipping costs. Baked-in powder-coated toughness.

MODEL NUMBER	STEP STYLE	OVERALL SIZE (W x D x H)	COLOR	WEIGHT (POUND)
RLAD-2-Y	RUBBER	20 ⁹ / ₁₆ " x 23 ¹ / ₂ " x 42"	YELLOW	33
RLAD-2-B	RUBBER	20 ⁹ / ₁₆ " x 23 ¹ / ₂ " x 42"	BLUE	33
RLAD-P-2-Y	PERFORATED	20 ⁹ / ₁₆ " x 23 ¹ / ₂ " x 42"	YELLOW	39
RLAD-P-2-B	PERFORATED	20 ⁹ / ₁₆ " x 23 ¹ / ₂ " x 42"	BLUE	39



LOCATION OF UNIT FROM
TILT AND ROLL UNIT FROM

TOUGH
POWDER
COATING

leborn RLAD-2-Y



Stainless Steel Step Stands

The Stainless Steel Step Stands are ideal for the school, home, or industrial facilities. The stainless steel construction is durable and long lasting in the harshest of conditions. Both models contain a slip resistant tread for stability. Model FT-SS-1HR includes a handrail for better personal steadiness when reaching for high objects.

MODEL NUMBER	DESCRIPTION	OVERALL SIZE (W x D x H)	WEIGHT (POUND)
FT-SS-1	STEP STAND	15" x 11¼" x 11"	16
FT-SS-1HR	STEP STAND W/ HANDRAIL	16¼" x 11¼" x 37"	18
FT-SS-1-HDL	HANDLE ONLY		2



model FT-SS-1

New

model FT-SS-1HR



48 Hours
to Ship

Rolling Step Stools (over 17 inches high)

Convenient and easy to use. Spring loaded casters along with a rubber ring around the base provide the extra grip needed when being used. Each step includes a rubber surface. Steel construction with powder coat finish. Uniform capacity is 500 pounds. Easily assembles without need for tools. Meets or exceeds GSA standards.

ITEM	MODEL NUMBER	COLOR	TOP STEP HEIGHT	BOTTOM STEP HEIGHT	TOP STEP DIAMETER	BASE DIAMETER	WEIGHT (POUND)
A	STEP-17-Y [Ⓢ]	YELLOW	17 ¹ / ₈ "	8 ⁷ / ₈ "	11 ³ / ₈ "	17 ⁷ / ₈ "	13
B	STEP-17-R [Ⓢ]	RED	17 ¹ / ₈ "	8 ⁷ / ₈ "	11 ³ / ₈ "	17 ⁷ / ₈ "	13
C	STEP-17-GY [Ⓢ]	GRAY	17 ¹ / ₈ "	8 ⁷ / ₈ "	11 ³ / ₈ "	17 ⁷ / ₈ "	13
D	STEP-17-BK [Ⓢ]	BLACK	17 ¹ / ₈ "	8 ⁷ / ₈ "	11 ³ / ₈ "	17 ⁷ / ₈ "	13

48 Hours
to Ship

Polyethylene Step Stools

When items are out of reach, do not strain, simply step up with one of our Polyethylene Step Stools. The two and three step units have rear opening access storage compartments. The four step unit comes with handrails. Individual step depth is 9¹/₂" with a top step depth of 11¹/₂". All models have rubber feet and a non-skid tape surface. Hand holes are standard for easy one person transportation.

MODEL NUMBER	COLOR	BASE SIZE (W x D)	TOP STEP (W x D x H)	UNIFORM CAPACITY	WEIGHT (POUND)
VST-1-Y [Ⓢ]	YELLOW	18" x 12"	17 ¹ / ₂ " x 12" x 11 ¹ / ₂ "	500 lb.	10
VST-2-Y [Ⓢ]	YELLOW	22" x 21"	17 ¹ / ₂ " x 12" x 19 ¹ / ₄ "	500 lb.	20
VST-3-Y [Ⓢ]	YELLOW	22" x 32"	17 ¹ / ₂ " x 11 ¹ / ₂ " x 28 ³ / ₄ "	500 lb.	30
VST-4-Y	YELLOW	22 ¹ / ₄ " x 43 ¹ / ₄ "	17 ³ / ₈ " x 13 ¹ / ₈ " x 38 ³ / ₄ "	500 lb.	72

New



Nestable Step Stools

These Nestable Step Stools help you obtain products that are out of reach. These step stools have larger platform with rubber inserts for more stability, and are nestable for easy storage. They come with a strap on each side for easy handling.

MODEL NUMBER	COLOR	NO. OF STEPS	OVERALL SIZE (W x D x H)	UNIFORM CAPACITY	WEIGHT (POUND)
VNST-1	YELLOW	1	25" x 25" x 10"	500 lb.	10
VNST-2	YELLOW	2	26" x 33" x 20"	500 lb.	19

48 Hours
to Ship

Fold-Up Step Ladders

These durable, lightweight, multipurpose ladders are perfect for homes, offices, schools, and industrial warehouses. Folds up to a 3" profile for convenient storage in closets and other tight spaces. Extra wide anti-slip step heights are 9", 18", and 27". A locking safety latch ensures a user's safety when climbing. The two step ladder uniform capacity is 200 pounds and the three step ladder uniform capacity is 225 pounds. Steel construction. Powder coat finish.

MODEL NUMBER	NO. OF STEPS	OVERALL SIZE (W x D x H)*	OVERALL SIZE (W x D x H)**	UNIFORM CAPACITY	WEIGHT (POUND)
FSL-2 [Ⓢ]	2	18" x 20" x 35"	18" x 2 ¹ / ₂ " x 38 ¹ / ₂ "	200 lb.	14
FSL-3 [Ⓢ]	3	19" x 26 ³ / ₄ " x 41 ¹ / ₄ "	19" x 2" x 44 ¹ / ₂ "	225 lb.	15

*WHEN IN USE / **FOLDED

48 Hours
to Ship

Serrated Steel Fold-Up Steps

Easily rotate step to vertical position when not in use. Step is steel with powder coat blue finish and has a serrated surface for traction. Two ⁷/₁₆" diameter mounting holes included. Fasteners are not included. Available in manual or spring loaded design. Baked-in powder-coated toughness.

MODEL NUMBER	DESCRIPTION	STEP SIZE (W x D)	UNIFORM CAPACITY	WEIGHT (POUND)
SFS-149 [Ⓢ]	MANUAL FOLD-UP STEP	13 ¹¹ / ₁₆ " x 9 ¹ / ₂ "	350 lb.	11
SFS-149-SL [Ⓢ]	SPRING LOADED STEP	13 ¹¹ / ₁₆ " x 9 ¹ / ₂ "	350 lb.	11

Double Sided Step Ladders

This unique Double Sided Step Ladder offers more versatility. The steps are made from perforated steel or grip strut steel. The base includes four feet with rubber tips to protect the floor. Portable units have (4) four spring loaded casters. Individual steps are either 17"W, 24"W, or 30¼"W x 7"D with the top step measuring 14"D. Steps are spaced 10" apart. Uniform capacity 350 pounds. Welded steel construction with a baked-in powder-coated toughness.



model LAD-DD-P-18-4-G



model LAD-DD-18-4-G

VERTICAL STEPS	TOP STEP (W x L)	TOP STEP HEIGHT	OVERALL SIZE (W x D x H)	UNIFORM CAPACITY	WEIGHT (POUND)	MODEL NUMBER			
						PERFORATED	GRIP STRUT		
WITHOUT CASTERS									
2	16 ¹³ / ₁₆ " x 14"	20"	19 ⁵ / ₁₆ " x 32 ¹ / ₁₆ " x 20"	350 lb.	75	LAD-DD-18-2-P	LAD-DD-18-2-G		
3	16 ¹³ / ₁₆ " x 14"	30"	19 ⁵ / ₁₆ " x 48 ¹³ / ₁₆ " x 30"	350 lb.	90	LAD-DD-18-3-P	LAD-DD-18-3-G		
4	16 ¹³ / ₁₆ " x 14"	40"	19 ⁵ / ₁₆ " x 65 ⁹ / ₁₆ " x 40"	350 lb.	126	LAD-DD-18-4-P	LAD-DD-18-4-G		
2	23 ⁹ / ₁₆ " x 14"	20"	26 ¹ / ₁₆ " x 32 ¹ / ₁₆ " x 20"	350 lb.	84	LAD-DD-26-2-P	LAD-DD-26-2-G		
3	23 ⁹ / ₁₆ " x 14"	30"	26 ¹ / ₁₆ " x 48 ¹³ / ₁₆ " x 30"	350 lb.	110	LAD-DD-26-3-P	LAD-DD-26-3-G		
4	23 ⁹ / ₁₆ " x 14"	40"	26 ¹ / ₁₆ " x 65 ⁹ / ₁₆ " x 40"	350 lb.	126	LAD-DD-26-4-P	LAD-DD-26-4-G		
2	30¼" x 14"	20"	32¾" x 32 ¹ / ₁₆ " x 20"	350 lb.	94	LAD-DD-32-2-P	LAD-DD-32-2-G		
3	30¼" x 14"	30"	32¾" x 48 ¹³ / ₁₆ " x 30"	350 lb.	126	LAD-DD-32-3-P	LAD-DD-32-3-G		
4	30¼" x 14"	40"	32¾" x 65 ⁹ / ₁₆ " x 40"	350 lb.	165	LAD-DD-32-4-P	LAD-DD-32-4-G		
WITH CASTERS						PERFORATED		GRIP STRUT	
2	16 ¹³ / ₁₆ " x 14"	20"	19 ⁵ / ₁₆ " x 32 ¹ / ₁₆ " x 20"	350 lb.	81	LAD-DD-P-18-2-P	LAD-DD-P-18-2-G		
3	16 ¹³ / ₁₆ " x 14"	30"	19 ⁵ / ₁₆ " x 48 ¹³ / ₁₆ " x 30"	350 lb.	100	LAD-DD-P-18-3-P	LAD-DD-P-18-3-G		
4	16 ¹³ / ₁₆ " x 14"	40"	19 ⁵ / ₁₆ " x 65 ⁹ / ₁₆ " x 40"	350 lb.	132	LAD-DD-P-18-4-P	LAD-DD-P-18-4-G		
2	23 ⁹ / ₁₆ " x 14"	20"	26 ¹ / ₁₆ " x 32 ¹ / ₁₆ " x 20"	350 lb.	90	LAD-DD-P-26-2-P	LAD-DD-P-26-2-G		
3	23 ⁹ / ₁₆ " x 14"	30"	26 ¹ / ₁₆ " x 48 ¹³ / ₁₆ " x 30"	350 lb.	116	LAD-DD-P-26-3-P	LAD-DD-P-26-3-G		
4	23 ⁹ / ₁₆ " x 14"	40"	26 ¹ / ₁₆ " x 65 ⁹ / ₁₆ " x 40"	350 lb.	150	LAD-DD-P-26-4-P	LAD-DD-P-26-4-G		
2	30¼" x 14"	20"	32¾" x 32 ¹ / ₁₆ " x 20"	350 lb.	100	LAD-DD-P-32-2-P	LAD-DD-P-32-2-G		
3	30¼" x 14"	30"	32¾" x 48 ¹³ / ₁₆ " x 30"	350 lb.	132	LAD-DD-P-32-3-P	LAD-DD-P-32-3-G		
4	30¼" x 14"	40"	32¾" x 65 ⁹ / ₁₆ " x 40"	350 lb.	171	LAD-DD-P-32-4-P	LAD-DD-P-32-4-G		

Adjustable Step Stands with Handrail

The Adjustable Step-Mate Stand can be used as either a comfortable worker platform or a semi-permanent step. The serrated surface provides extra traction to reduce the potential for slipping. Individual step depth is 11¾". Models feature (2) two bolt-on handrails for added stability during use. Handrail measure 20¼"D x 40⁷/₈"H when installed. The legs adjust individually, by screwing them into or out of the leg base, so the unit can be leveled on uneven floors. Each leg fitted with rubber tip for better grip. The unit has a welded construction with baked-in powder-coated toughness.

MODEL NUMBER	OVERALL SIZE (W x D)	LOWER STEP HEIGHT	TOP STEP HEIGHT	WEIGHT (POUND)
ASP-24-HR	25 ¹⁵ / ₁₆ " x 22 ⁷ / ₈ "	6" TO 8¼"	13" TO 15¼"	98
ASP-36-HR	38 ³ / ₁₆ " x 22 ⁷ / ₈ "	6" TO 8¼"	13" TO 15¼"	110
ASP-48-HR	50 ¹ / ₂ " x 22 ⁷ / ₈ "	6" TO 8¼"	13" TO 15¼"	122



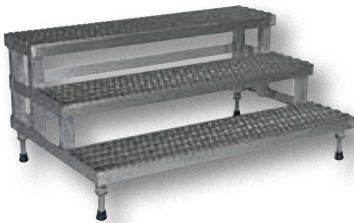
ASP-48-HR



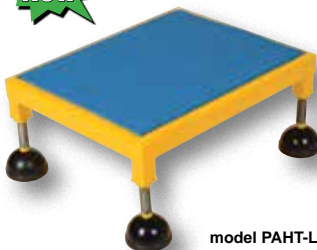
model ASP-48



model ASP-48-3



model ASP-48-3-A

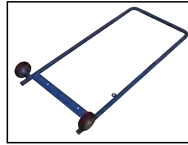


model PAHT-L-1924



Adjustable Step-Mate Stands

Our Adjustable Step-Mate Stands can be used as either a comfortable worker platform or a semi-permanent step. Individual step size is 11¾" deep, aluminum construction 117/8" deep. Serrated surface ensures safe footing. Legs adjust individually by screwing them into or out of the leg base. Welded construction. Uniform capacity 500 pounds. Steel units feature a yellow baked-in powder-coated toughness.



Bolt-on portability kit, allows Step-Mate Stands to be tilted and moved. Handle also serves as a single side handrail for extra stability and balance while standing on top step. Includes handle and two rigid wheels. Steel construction with painted finish. Fits on (2) two step models that measures 24", 36" and 48" wide units.

model ASP-PORT

MODEL NUMBER	OVERALL SIZE (W x D)	NUMBER OF STEPS	LOWER STEP HEIGHT RANGE	MIDDLE STEP HEIGHT RANGE	UPPER STEP HEIGHT RANGE	WEIGHT (POUND)
STEEL CONSTRUCTION						
ASP-24	23 ¹³ / ₁₆ " x 22 ⁷ / ₈ "	2	6" to 8¼"	13" to 15¼"	--	41
ASP-36	36 ³ / ₁₆ " x 22 ⁷ / ₈ "	2	6" to 8¼"	13" to 15¼"	--	49
ASP-48	48½" x 22 ⁷ / ₈ "	2	6" to 8¼"	13" to 15¼"	--	59
ASP-60	59¾" x 22 ⁷ / ₈ "	2	6" to 8¼"	13" to 15¼"	--	101
ASP-72	72 ¹ / ₁₆ " x 22 ⁷ / ₈ "	2	6" to 8¼"	13" to 15¼"	--	126
ASP-24-3	23 ¹³ / ₁₆ " x 33 ⁷ / ₈ "	3	6" to 8¼"	13" to 15¼"	20" to 22¼"	60
ASP-36-3	36 ³ / ₁₆ " x 33 ⁷ / ₈ "	3	6" to 8¼"	13" to 15¼"	20" to 22¼"	109
ASP-48-3	48½" x 33 ⁷ / ₈ "	3	6" to 8¼"	13" to 15¼"	20" to 22¼"	126
STAINLESS STEEL CONSTRUCTION						
ASP-24-SS	23¾" x 22 ⁷ / ₈ "	2	6¼" to 8¼"	13¼" to 15¼"	--	38
ASP-36-SS	35¾" x 22 ⁷ / ₈ "	2	6¼" to 8¼"	13¼" to 15¼"	--	58
ASP-48-SS	47¾" x 22 ⁷ / ₈ "	2	6¼" to 8¼"	13¼" to 15¼"	--	82
ASP-60-SS	59¾" x 22 ⁷ / ₈ "	2	6¼" to 8¼"	13¼" to 15¼"	--	112
ASP-72-SS	71¾" x 22 ⁷ / ₈ "	2	6¼" to 8¼"	13¼" to 15¼"	--	124
ASP-24-3-SS	23¾" x 33 ⁷ / ₈ "	3	6¼" to 8¼"	13¼" to 15¼"	20¼" to 22¼"	61
ASP-36-3-SS	35¾" x 33 ⁷ / ₈ "	3	6¼" to 8¼"	13¼" to 15¼"	20¼" to 22¼"	65
ASP-48-3-SS	47¾" x 33 ⁷ / ₈ "	3	6¼" to 8¼"	13¼" to 15¼"	20¼" to 22¼"	113
ALUMINUM CONSTRUCTION						
ASP-24-A	24 ¹ / ₈ " x 22¾"	2	6" to 7½"	13" to 14½"	--	24
ASP-36-A	36 ¹ / ₈ " x 22¾"	2	6" to 7½"	13" to 14½"	--	35
ASP-48-A	48 ¹ / ₈ " x 22¾"	2	6" to 7½"	13" to 14½"	--	44
ASP-60-A	60 ¹ / ₈ " x 22¾"	2	6" to 7½"	13" to 14½"	--	66
ASP-72-A	72 ¹ / ₈ " x 22¾"	2	6" to 7½"	13" to 14½"	--	87
ASP-24-3-A	24 ¹ / ₈ " x 33 ⁵ / ₈ "	3	6" to 7½"	13" to 14½"	20" to 22¼"	51
ASP-36-3-A	36 ¹ / ₈ " x 33 ⁵ / ₈ "	3	6" to 7½"	13" to 14½"	20" to 22¼"	55
ASP-48-3-A	48 ¹ / ₈ " x 33 ⁵ / ₈ "	3	6" to 7½"	13" to 14½"	20" to 22¼"	103
PORTABILITY OPTOINS						
ASP-PORT	BOLT-ON PORTABILITY KIT for ASP-24, ASP-36 & ASP-48 units					12

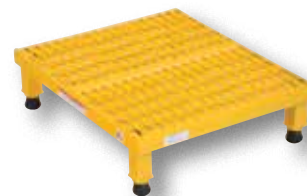
Portable Adjustable Height Worker Stands

Independently adjustable height legs may be set to level unit on uneven floors. Ergonomic matting on top surface provides a comfortable standing surface. Each leg is fitted with a spring-loaded swivel caster with a protective steel caster cup with rubber bottom ring. All welded steel construction with baked-in powder-coated toughness. Uniform capacity is 500 pounds each. Complies with OSHA 1910.26 specifications.

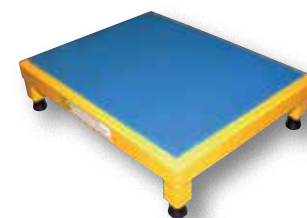
	DECK SIZE (W x L)	SERVICE RANGE	MODEL NUMBER	WEIGHT (POUND)	MODEL NUMBER	WEIGHT (POUND)
				SERRATED SURFACE		ERGONOMIC MATTING SURFACE
STEEL CONSTRUCTION	19" x 24"	8¾" x 12"	PAHW-L-1924	45	PAHT-L-1924	41
	24" x 24"	8¾" x 12"	PAHW-L-2424	52	PAHT-L-2424	47
	19" x 36"	8¾" x 12"	PAHW-L-1936	59	PAHT-L-1936	52
	24" x 36"	8¾" x 12"	PAHW-L-2436	66	PAHT-L-2436	60
	19" x 48"	8¾" x 12"	PAHW-L-1948	79	PAHT-L-1948	70
	24" x 48"	8¾" x 12"	PAHW-L-2448	87	PAHT-L-2448	81
	19" x 24"	11½" x 15"	PAHW-H-1924	47	PAHT-H-1924	43
	24" x 24"	11½" x 15"	PAHW-H-2424	54	PAHT-H-2424	49
	19" x 36"	11½" x 15"	PAHW-H-1936	60	PAHT-H-1936	54
	24" x 36"	11½" x 15"	PAHW-H-2436	67	PAHT-H-2436	62
	19" x 48"	11½" x 15"	PAHW-H-1948	82	PAHT-H-1948	73
	24" x 48"	11½" x 15"	PAHW-H-2448	90	PAHT-H-2448	84

Adjustable Work-Mate Stands

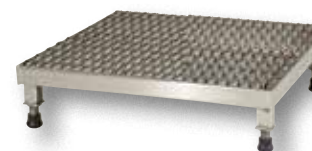
Minimizes fatigue by elevating workers to heights that are comfortable and ergonomically correct. Especially useful when multiple shift employees operate the same piece of machinery. Serrated style platforms ensure safe footing in most wet environments. Ergonomic matting deck style provides comfort for the operator who stands all day. The height of each leg can be adjusted individually to ensure proper working height. All sizes have four legs except the 60", 72", and 96" long models which have six legs. Uniform capacity is 500 pounds each. Welded construction. Steel units feature a yellow baked-in powder-coated toughness.



SERRATED DECK



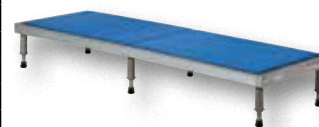
ERGO-MATTING DECK



STAINLESS STEEL



ALUMINUM WITH GRIP STRUT



ALUMINUM WITH ERGO MATTING



THREADED SCREW LEGS ARE STANDARD



Custom Finish Available

	DECK SIZE (W x L)	SERVICE RANGE	MODEL NUMBER	WEIGHT (POUND)	MODEL NUMBER	WEIGHT (POUND)
STEEL CONSTRUCTION			SERRATED SURFACE		ERGONOMIC MATTING SURFACE	
	19" x 24"	6¾" to 8¾"	AHW-L-1924	27	AHT-L-1924	28
	24" x 24"	6¾" to 8¾"	AHW-L-2424	33	AHT-L-2424	34
	19" x 36"	6¾" to 8¾"	AHW-L-1936	39	AHT-L-1936	38
	24" x 36"	6¾" to 8¾"	AHW-L-2436	42	AHT-L-2436	45
	19" x 48"	6¾" to 8¾"	AHW-L-1948	44	AHT-L-1948	48
	24" x 48"	6¾" to 8¾"	AHW-L-2448	50	AHT-L-2448	57
	24" x 60"	6¾" to 8¾"	AHW-L-2460	64	AHT-L-2460	111
	24" x 72"	6¾" to 8¾"	AHW-L-2472	101	AHT-L-2472	127
	24" x 96"	6¾" to 8¾"	AHW-L-2496	120	AHT-L-2496	152
	19" x 24"	10½" to 16½"	AHW-H-1924	36	AHT-H-1924	35
	24" x 24"	10½" to 16½"	AHW-H-2424	37	AHT-H-2424	37
	19" x 36"	10½" to 16½"	AHW-H-1936	46	AHT-H-1936	46
	24" x 36"	10½" to 16½"	AHW-H-2436	51	AHT-H-2436	54
	19" x 48"	10½" to 16½"	AHW-H-1948	54	AHT-H-1948	58
	24" x 48"	10½" to 16½"	AHW-H-2448	64	AHT-H-2448	64
	24" x 60"	10½" to 16½"	AHW-H-2460	104	AHT-H-2460	124
	24" x 72"	10½" to 16½"	AHW-H-2472	130	AHT-H-2472	128
24" x 96"	10½" to 16½"	AHW-H-2496	146	AHT-H-2496	170	
STAINLESS STEEL CONSTRUCTION			SERRATED SURFACE		ERGONOMIC MATTING SURFACE	
	19" x 24"	6¾" to 8¾"	AHW-L-1924-SS	30	AHT-L-1924-SS	35
	24" x 24"	6¾" to 8¾"	AHW-L-2424-SS	39	AHT-L-2424-SS	36
	19" x 36"	6¾" to 8¾"	AHW-L-1936-SS	45	AHT-L-1936-SS	41
	24" x 36"	6¾" to 8¾"	AHW-L-2436-SS	50	AHT-L-2436-SS	48
	19" x 48"	6¾" to 8¾"	AHW-L-1948-SS	53	AHT-L-1948-SS	51
	24" x 48"	6¾" to 8¾"	AHW-L-2448-SS	59	AHT-L-2448-SS	57
	24" x 60"	6¾" to 8¾"	AHW-L-2460-SS	65	AHT-L-2460-SS	112
	24" x 72"	6¾" to 8¾"	AHW-L-2472-SS	115	AHT-L-2472-SS	132
	24" x 96"	6¾" to 8¾"	AHW-L-2496-SS	124	AHT-L-2496-SS	158
	19" x 24"	10½" to 16½"	AHW-H-1924-SS	37	AHT-H-1924-SS	37
	24" x 24"	10½" to 16½"	AHW-H-2424-SS	40	AHT-H-2424-SS	40
	19" x 36"	10½" to 16½"	AHW-H-1936-SS	47	AHT-H-1936-SS	57
	24" x 36"	10½" to 16½"	AHW-H-2436-SS	57	AHT-H-2436-SS	63
	19" x 48"	10½" to 16½"	AHW-H-1948-SS	58	AHT-H-1948-SS	55
	24" x 48"	10½" to 16½"	AHW-H-2448-SS	65	AHT-H-2448-SS	68
	24" x 60"	10½" to 16½"	AHW-H-2460-SS	111	AHT-H-2460-SS	130
	24" x 72"	10½" to 16½"	AHW-H-2472-SS	135	AHT-H-2472-SS	132
24" x 96"	10½" to 16½"	AHW-H-2496-SS	136	AHT-H-2496-SS	175	
ALUMINUM CONSTRUCTION			SERRATED SURFACE		ERGONOMIC MATTING SURFACE	
	19" x 24"	5¾" to 7¾"	AHW-L-1924-A	23	AHT-L-1924-A	29
	24" x 24"	5¾" to 7¾"	AHW-L-2424-A	26	AHT-L-2424-A	34
	19" x 36"	5¾" to 7¾"	AHW-L-1936-A	36	AHT-L-1936-A	38
	24" x 36"	5¾" to 7¾"	AHW-L-2436-A	33	AHT-L-2436-A	46
	19" x 48"	5¾" to 7¾"	AHW-L-1948-A	45	AHT-L-1948-A	50
	24" x 48"	5¾" to 7¾"	AHW-L-2448-A	41	AHT-L-2448-A	57
	24" x 60"	5¾" to 7¾"	AHW-L-2460-A	52	AHT-L-2460-A	111
	24" x 72"	5¾" to 7¾"	AHW-L-2472-A	60	AHT-L-2472-A	129
	24" x 96"	5¾" to 7¾"	AHW-L-2496-A	75	AHT-L-2496-A	153
	19" x 24"	9½" to 15½"	AHW-H-1924-A	29	AHT-H-1924-A	40
	24" x 24"	9½" to 15½"	AHW-H-2424-A	32	AHT-H-2424-A	43
	19" x 36"	9½" to 15½"	AHW-H-1936-A	42	AHT-H-1936-A	55
	24" x 36"	9½" to 15½"	AHW-H-2436-A	39	AHT-H-2436-A	61
	19" x 48"	9½" to 15½"	AHW-H-1948-A	51	AHT-H-1948-A	63
	24" x 48"	9½" to 15½"	AHW-H-2448-A	47	AHT-H-2448-A	65
	24" x 60"	9½" to 15½"	AHW-H-2460-A	61	AHT-H-2460-A	125
	24" x 72"	9½" to 15½"	AHW-H-2472-A	69	AHT-H-2472-A	130
24" x 96"	9½" to 15½"	AHW-H-2496-A	84	AHT-H-2496-A	173	

SERIES LAD-FM FACE MOUNTED/ RETRACTABLE MEZZANINE LADDER

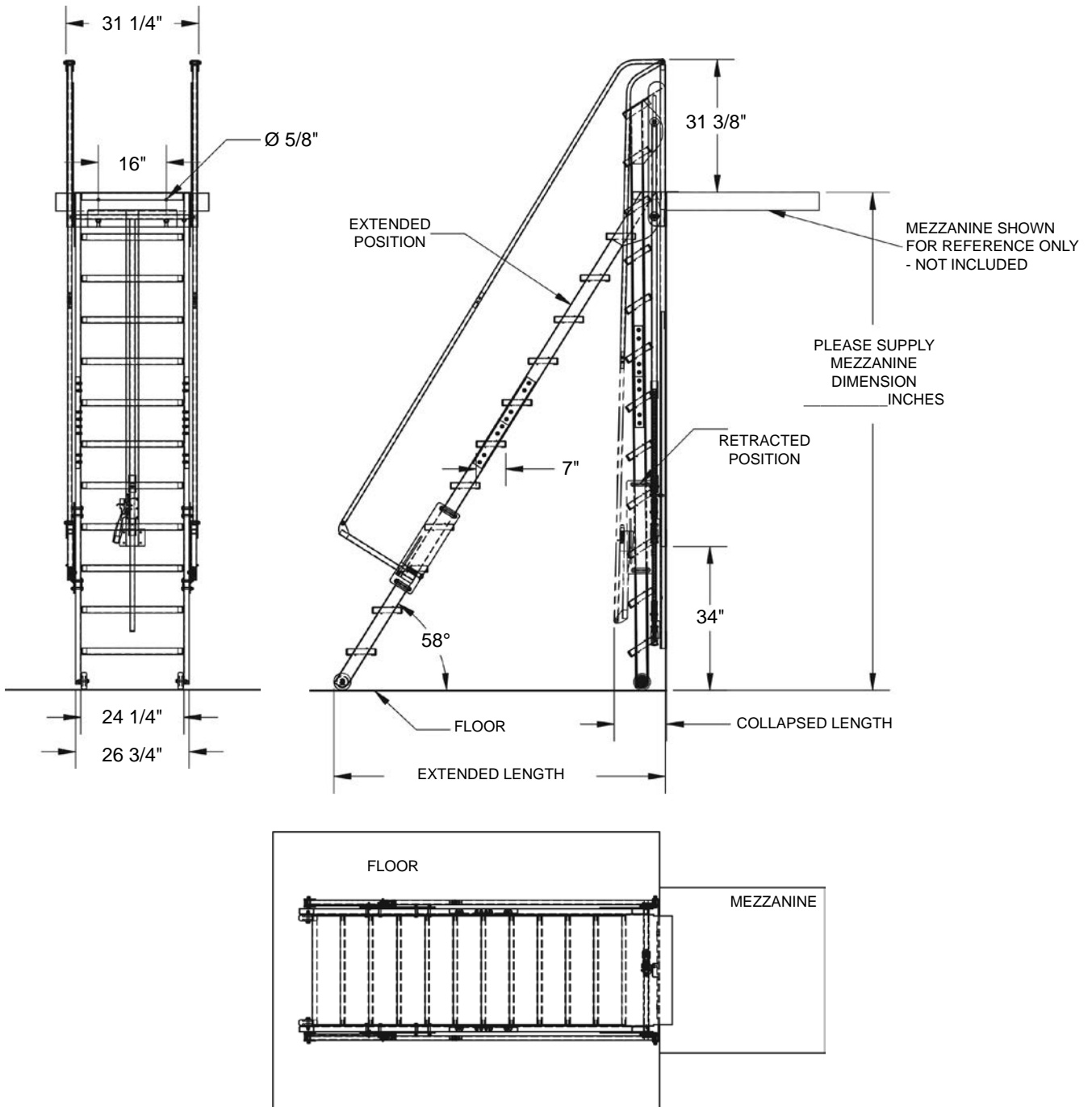
SURVEY SHEET

CUSTOMER INFORMATION

CONTACT: _____
 COMPANY: _____
 PHONE: _____
 EMAIL: _____

SPECIFICATIONS

MEZZANINE HEIGHT: _____



Order from: Dick Jones Sales, Inc.
 P.O. Box 141
 Hanover, PA 17331
 Phone 800-441-9955
 dickjones@dickjonesales.com

CUSTOMER INFORMATION

CONTACT: _____
 COMPANY: _____
 PHONE: _____
 EMAIL: _____

**SERIES MP
 MODULAR STEEL WORK
 PLATFORM SYSTEM**

SURVEY SHEET



PLATFORM SPECIFICATIONS

**NOT
 CRITICAL**

OVERALL WIDTH: _____
 OVERALL LENGTH: _____
 USABLE WIDTH: _____
 USABLE LENGTH: _____
 USABLE HEIGHT: _____
 NUMBER OF ENTRIES/EXITS: _____
 DO YOU REQUIRE ANCHORS: _____

INCLUDE ANY INFORMATION ABOUT LAYOUT:

CONFIGURATIONS:

- STRAIGHT
- "L-STYLE"
- OTHER/ DESCRIBE/DRAW:

APPLICATION / LOADING INFO:

APPLICATION INFORMATION:

NUMBER OF SHIFTS: _____
 SPECIAL TEMP. REQUIREMENTS: _____
 SIDE LOADING: _____
 SPECIAL LOADING & UNLOADING REQUIREMENTS: _____

ADDITIONAL NOTES:

QUOTE OPTIONS:

- EXACTLY AS SPECIFIED
- QUICKEST TO SHIP
- CHEAPEST / CLOSEST TO VESTIL STANDARD

Order from: Dick Jones Sales, Inc.
 P.O. Box 141
 Hanover, PA 17331
 Phone 800-441-9955
 dickjones@dickjonessales.com

REQUESTED DELIVERY DATE: _____